

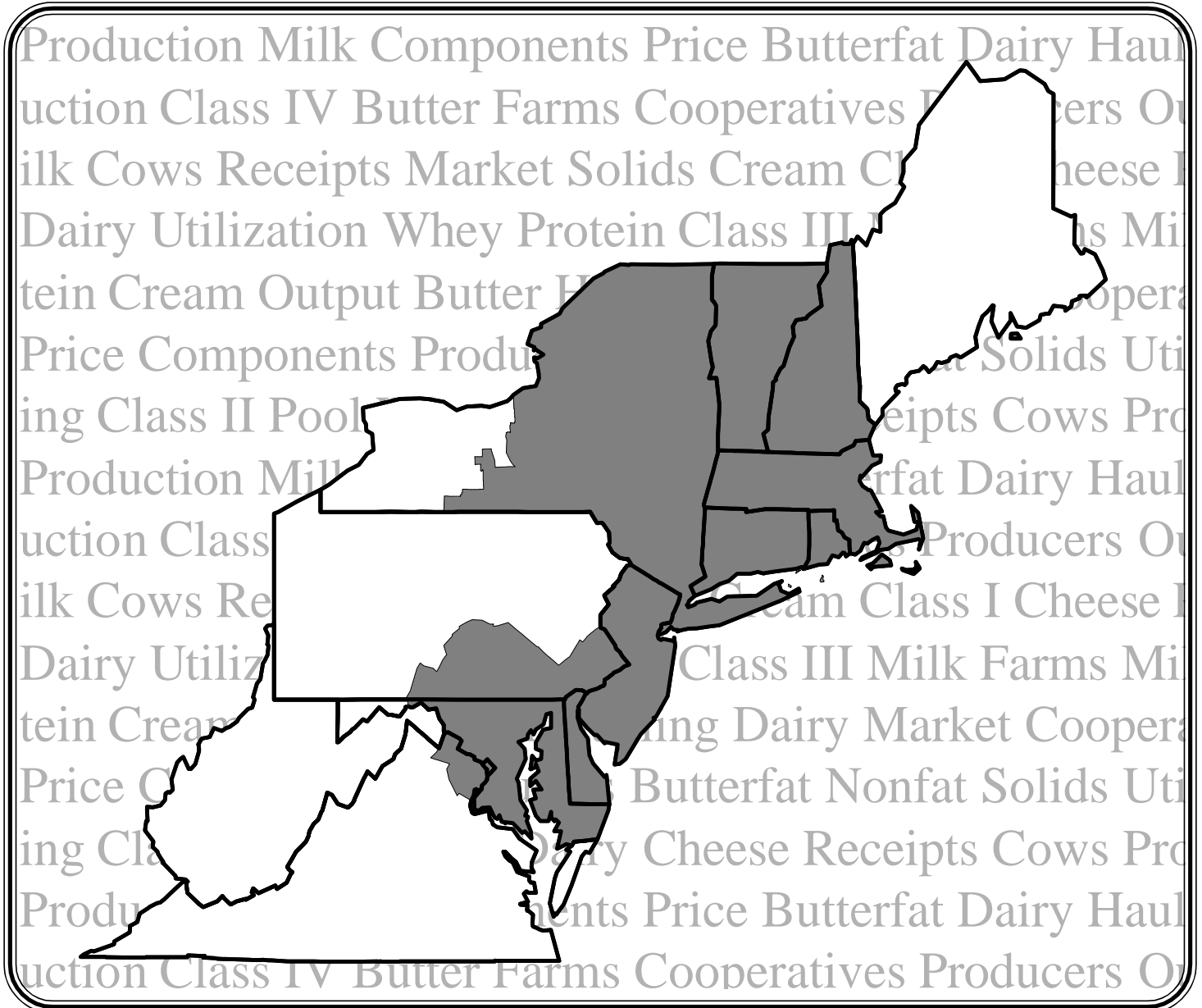
The Market Administrator's Annual Statistical Bulletin

Northeast Milk Marketing Area
Federal Order No. 1

Erik F. Rasmussen, Market Administrator

VOLUME 2

2001



Map of Northeast Marketing Area

Albany:
One Columbia Circle
Albany, NY 12203-6379
Tel.: (518) 452-4410
Fax: (518) 464-6468
e-mail: MAAlbany@fedmilk1.com

Boston:
30 Winter Street, Boston, MA 02108
Mailing Address:
P.O. Box 51478 (Fort Point Station)
Boston, MA 02205-1478
Tel.: (617) 542-8966 — Fax: (617) 542-0105
e-mail: MABoston@fedmilk1.com
website: www.fmmone.com

Alexandria:
P.O. Box 25828
Alexandria, VA 22313-5828
Tel.: (703) 549-7000
Fax: (703) 549-7003
e-mail: MAAlexandria@fedmilk1.com

Contents

	Page
Summary	1
Listing of Pool Handlers and Plants Operating Under the Northeast Order, December 2001	33
Cooperatives Marketing in the Northeast as of December 31, 2001	37
Changes to Handler List by Month	38
<i>Bulletin</i> Highlights	41

Tables

1. Class I Prices and Advanced Pricing Factors at <i>Suffolk County, MA (Boston)</i>	2
2. Class II Prices	2
3. Class III Prices	3
4. Class IV Prices	3
5. Producer Prices at <i>Suffolk County, MA (Boston)</i>	4
6. Annual Weighted Average Price for Pooled Producer Milk	5
7. Weighted Monthly Average NASS Prices	6
8. Receipts of Milk from Producers by State	7
9. Number of Producers by State	8
10. Daily Average Output of Producer Milk per Farm by State	9
11. Producer Receipts by State and County	10
12. Number of Farms by Size Categories, May and December 2001	22
13. Receipts of Fluid Milk Products and Cream by Pool Plants	23
14. Receipts from Producers by Class and Plant Location Differential	24
15. Receipts from Producers by Class	26
16. Percent of Receipts from Producers by Class	26
17. Utilization of Fluid Milk Products and Cream by Pool Plants	27
18. Fluid Milk Products Utilized as Class I Milk in the Marketing Area by Pool Plants	28
19. Class II Use of Fluid Milk Products and Cream by Pool Plants	29
20. Class III Use of Fluid Milk Products and Cream by Pool Plants	30
21. Class IV Use of Fluid Milk Products and Cream by Pool Plants	31
22. Minimum Price Class Use and Total Utilization by Pool Plants	31
23. Number of Handlers	32
24. Number of Pool Plants	32

Figures

1a. Class Prices and Statistical Uniform Price	4
1b. Prices for Components	4
2. Weighted Monthly Average NASS Prices	6
3. Receipts of Milk from Producers by State	7
4. Average Proportion of Producers by State	8
5. Daily Average Output per Farm, Top Five Milk Contributing States	9
6. Percentage of Farms by Size Categories, May and December 2001	22
7. Receipts of Milk from Producers	23
8. Plant Location Differentials Map	25
9. Utilization of Fluid Milk Products and Cream by Pool Plants	27

Summary

During 2001, the volume of milk received from producers shipping to handlers regulated under the Northeast Order totaled 24.6 billion pounds. This was an increase of 2.4 percent from last year. The average number of producers declined less than 1 percent from the previous year, while average daily deliveries per producer increased 3.5 percent.

This report provides information about the operation of the Northeast Order during 2001. The series of tables gives statistical data; some of the data is displayed graphically in charts. The *Bulletin* Highlights section summarizes, on a monthly basis, important events that impacted the dairy industry in 2001. The report also includes lists of handlers and cooperatives operating under the Order.

Producer Milk Receipts

As stated above, the total volume of milk received from producers increased by nearly 600 million pounds (2.4 percent) during 2001. During the first 4 months of the year, producer milk receipts were below the previous year's figures. Production was down in the major contributing states. By May, Pennsylvania had rebounded; New York didn't come back until August. Much of the difference in milk receipts came from other states outside of the normal Northeast Order milkshed.

The average number of producers pooled by handlers regulated under the Order equaled 17,165 in 2001, a decline of less than one percent from 2000. The year finished with 172 fewer producers than in December 2000. This may be a sign that producer numbers are declining at a lesser rate, but this is hard to confirm since these numbers are greatly affected by pooling changes. Daily deliveries per producer (DDP) were down in the beginning of 2001, but gained momentum as the year progressed averaging 3,918 pounds, an increase of 3.5 percent from 2000.

Class Utilization

Class I utilization averaged 43.3 percent in 2001, down 0.6 percentage points from the previous year. The total volume of milk used in Class I increased 1.2 percent, but because of a larger volume of producer milk receipts, the percentage declined. Class II usage declined 1.1 percent resulting in a utilization decline of 0.6 percentage points. Class III volume increased 10 percent boosting utilization 2.2 percentage points. Milk used in Class IV declined 8.6 percent, a drop of 1 percentage point in utilization.

Class Prices Higher

Lower milk production in many of the leading dairy states combined with strong demand nationally to keep prices up during 2001. Commodity market prices were strong throughout much of the year resulting in class prices that were significantly above those in 2000. At Suffolk County, Massachusetts

(Boston), the Class I price averaged \$2.72 per hundredweight higher than last year. The Class II price averaged \$2.00 higher; Class III jumped \$3.36; and Class IV was up \$1.93 from 2000. Once again, the Class IV price was the dominant price-setter, surpassing the Class III price in 7 months during 2001.

Record-Setting Component Prices

Average producer tests changed little from the previous year, but combined with greater volume and higher prices, resulted in higher overall payments to producers. The average butterfat price during 2001 was nearly 48 percent higher than last year, while the protein price averaged nearly 16 percent higher than in 2000. The other solids price was more than double the price during 2000.

The record-setting values for protein and butterfat during 2001 were the key to higher producer prices paid during the year. Combining test values, volumes, and prices resulted in a simple average Statistical Uniform Price (SUP) of \$15.67 per hundredweight (at Boston) for 2001. This was 20.2 percent higher than the average SUP in 2000.

Support Prices

The Commodity Credit Corporation (CCC) purchased 1.3 million pounds of cheese and 356.8 million pounds of nonfat dry milk during the 2001 calendar year. No butter was purchased during this period. Compared to 2000, these purchases were down considerably.

On May 31, 2001, the CCC purchase price for butter increased to \$0.8548 and the purchase price for nonfat dry milk decreased to \$0.9000 per pound. The prices for block Cheddar and barrel cheese were not changed. The support price for milk (at 3.67 percent butterfat) remained at \$9.90 per hundredweight.

When the price support program was extended by the 2001 Appropriations Bill at the end of 2000, prices remained unchanged, but were to be reconsidered during 2001. By May, the USDA decided to change the prices for butter and nonfat dry milk based on the accumulation of nonfat dry milk, the level of expenditures these purchases required, and reported market distortions at that time.

Class III/IV Price Formulas

In December 2000, a referendum passed implementing revised price formulas for Class III and IV milk effective with the January 2001 pool. On January 31, 2001, a ruling halted the implementation of these changes. The USDA spent much of the year re-evaluating the hearing record, comments received, and the judicial decision. A recommended decision was released on October 23, 2001. Initially, comments were due by November 26, 2001. On that date, the USDA extended the comment period until January 25, 2002.

1 Class I Prices and Advanced Pricing Factors at *Suffolk County, MA (Boston)*, 2001

	Class I Price Mover Advanced Pricing Factors				Class I Price		
	Butterfat	Class III	Class IV	Base	Skim	Butterfat	3.5%
	\$/lb	Skim	Skim	Skim Price	\$/cwt	\$/lb	Butterfat*
							\$/cwt
January	1.8244	4.53	7.88	7.88	11.13	1.8569	17.24
February	1.2352	4.86	7.89	7.89	11.14	1.2677	15.19
March	1.4483	5.36	7.86	7.86	11.11	1.4808	15.90
April	1.6722	5.80	7.86	7.86	11.11	1.7047	16.69
May	1.8887	5.55	7.88	7.88	11.13	1.9212	17.46
June	2.1033	6.26	7.90	7.90	11.15	2.1358	18.24
July	2.2104	7.56	7.88	7.88	11.13	2.2429	18.59
August	2.2212	7.90	7.50	7.90	11.15	2.2537	18.65
September	2.2432	7.99	7.24	7.99	11.24	2.2757	18.81
October	2.5160	7.38	7.30	7.38	10.63	2.5485	19.18
November	1.8556	9.60	7.26	9.60	12.85	1.8881	19.01
December	1.4513	6.32	7.15	7.15	10.40	1.4838	15.23
Average	1.8892	6.59	7.63	7.93	11.18	1.9217	17.52

* Price does not include Processor Assessment, Northeast Dairy Compact Over-Order Obligation, or the Administrative Assessment.

2 Class II Prices, 2001

	Butterfat	Nonfat Solids	Skim	3.5% Butterfat
	\$/lb		\$/cwt	
January	1.2966	0.9533	8.58	12.82
February	1.4696	0.9544	8.59	13.43
March	1.6890	0.9511	8.56	14.17
April	1.9553	0.9511	8.56	15.10
May	2.1261	0.9533	8.58	15.72
June	2.2159	0.9556	8.60	16.05
July	2.1953	0.9533	8.58	15.96
August	2.3046	0.9111	8.20	15.98
September	2.4519	0.8822	7.94	16.24
October	1.6596	0.8889	8.00	13.53
November	1.4570	0.8844	7.96	12.78
December	1.4392	0.8722	7.85	12.61
Average	1.8550	0.9259	8.33	14.53

3 Class III Prices, 2001

	<u>Butterfat</u>	<u>Protein</u>	<u>Other Solids</u>	<u>Skim</u>	<u>3.5% Butterfat</u>
		<u>\$/lb</u>			<u>\$/cwt</u>
January	1.2896	1.6181	0.1120	5.68	9.99
February	1.4626	1.4951	0.1199	5.34	10.27
March	1.6820	1.6498	0.1039	5.73	11.42
April	1.9483	1.5443	0.1081	5.43	12.06
May	2.1191	1.9108	0.1229	6.65	13.83
June	2.2089	2.1670	0.1409	7.55	15.02
July	2.1883	2.3175	0.1510	8.08	15.46
August	2.2976	2.2188	0.1535	7.78	15.55
September	2.4449	2.1647	0.1520	7.61	15.90
October	1.6526	2.6664	0.1482	9.14	14.60
November	1.4500	1.8045	0.1470	6.46	11.31
December	1.4322	1.9782	0.1517	7.03	11.80
Average	1.8480	1.9613	0.1343	6.87	13.10

4 Class IV Prices, 2001

	<u>Butterfat</u>	<u>Nonfat Solids</u>	<u>Skim</u>	<u>3.5% Butterfat</u>
		<u>\$/lb</u>		<u>\$/cwt</u>
January	1.2896	0.8765	7.89	12.13
February	1.4626	0.8737	7.86	12.70
March	1.6820	0.8727	7.85	13.46
April	1.9483	0.8745	7.87	14.41
May	2.1191	0.8780	7.90	15.04
June	2.2089	0.8748	7.87	15.33
July	2.1883	0.8234	7.41	14.81
August	2.2976	0.8073	7.27	15.06
September	2.4449	0.8097	7.29	15.59
October	1.6526	0.8041	7.24	12.77
November	1.4500	0.7949	7.15	11.97
December	1.4322	0.7799	7.02	11.79
Average	1.8480	0.8391	7.55	13.76

5 **Producer Prices at Suffolk County, MA (Boston), 2001**

	Producer Price Differential \$/cwt	Statistical Uniform Price*	Butterfat	Protein \$/lb	Other Solids
January	3.77	13.76	1.2896	1.6181	0.1120
February	3.35	13.62	1.4626	1.4951	0.1199
March	3.08	14.50	1.6820	1.6498	0.1039
April	3.18	15.24	1.9483	1.5443	0.1081
May	2.49	16.32	2.1191	1.9108	0.1229
June	2.06	17.08	2.2089	2.1670	0.1409
July	1.75	17.21	2.1883	2.3175	0.1510
August	1.98	17.53	2.2976	2.2188	0.1535
September	1.86	17.76	2.4449	2.1647	0.1520
October	1.44	16.04	1.6526	2.6664	0.1482
November	3.97	15.28	1.4500	1.8045	0.1470
December	1.92	13.72	1.4322	1.9782	0.1517
Simple Average	2.57	15.67	1.8480	1.9613	0.1343

* Reported at 3.5 percent butterfat, 2.99 percent protein, and 5.69 percent other solids.

Figure 1a

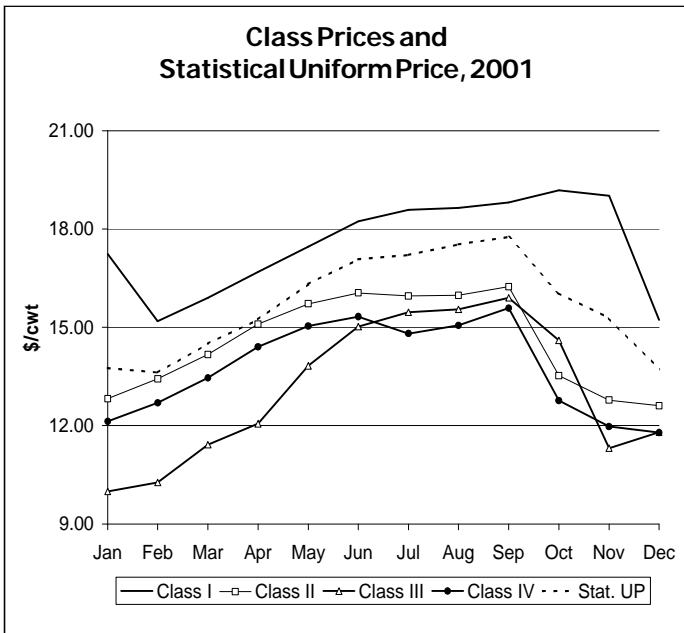
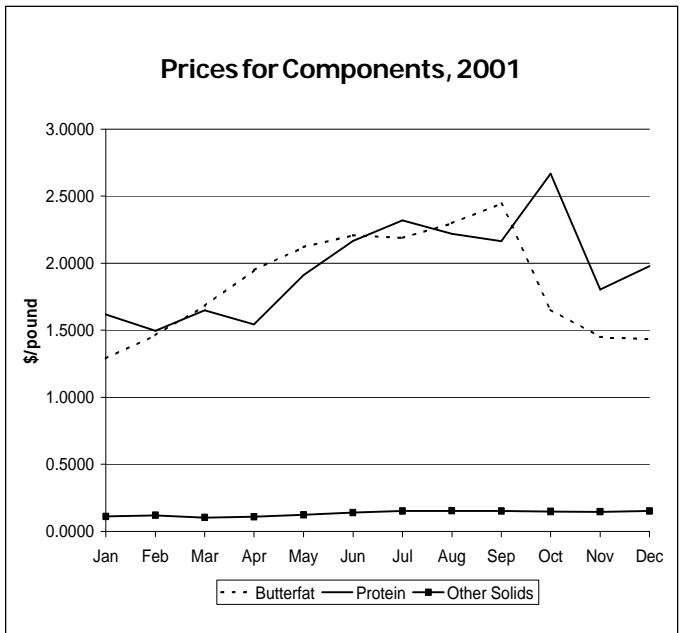


Figure 1b



6 Annual Weighted Average Price for Pooled Producer Milk*, 2001

Computation of Annual Weighted Average Price of \$15.66

<u>Producer Milk</u>	<u>Percent</u>	<u>Pounds</u>	<u>Minimum Class Price per cwt**</u>
Class I	43.3	10,642,087,857	\$ 17.52
Class II	16.7	4,101,530,653	14.53
Class III	31.3	7,680,222,371	13.10
Class IV	8.7	2,133,393,939	13.76
Total Producer Milk	100.0	24,557,234,820	

Producer Price Differential	\$2.56 /cwt @ Suffolk County, MA (Boston)
Statistical Uniform Price	\$15.66 /cwt @ Suffolk County, MA (Boston)

Producer Pay Prices per pound**

Protein Price	\$1.9613
Butterfat Price	1.8480
Other Solids Price	0.1343
Nonfat Solids Price	0.8391

COMPUTATION OF PRODUCER PRICE DIFFERENTIAL			
	<u>Product Pounds</u>	<u>Component Value</u>	<u>Total Value</u>
Class I— Skim	10,421,378,799	\$1,165,344,938.77	
Butterfat	220,709,058	424,479,323.29	
Less: Location Adjustment to Handlers		(32,364,091.27)	\$1,557,460,170.79
Class II— Butterfat	302,150,898	562,357,669.19	
Nonfat Solids	342,662,664	317,076,010.22	879,433,679.41
Class III— Butterfat	272,302,458	506,755,900.24	
Protein	229,912,839	449,542,935.27	
Other Solids	437,777,840	58,499,649.24	1,014,798,484.75
Class IV— Butterfat	107,993,368	192,451,741.91	
Nonfat Solids	182,970,710	154,139,558.17	346,591,300.08
Total Classified Value			\$3,798,283,635.03
Add: Overage—All Classes			1,777,226.85
Inventory Reclassification—All Classes			259,856.64
Other Source Receipts	2,321,188		94,218.19
Less: Producer Component Valuations			(3,295,576,315.80)
Subtotal			\$504,838,620.91
Add: Location Adjustment to Producers			124,205,316.36
One-half Unobligated Balance—Producer Settlement Fund			11,614,180.01
Total Pool Milk & Aggregate Value	24,559,556,008		640,658,117.28
Less: Producer Settlement Fund—Reserve			(11,171,736.93)
Producer Price Differential per cwt		\$2.56	\$629,486,380.35
Statistical Uniform Price per cwt		\$15.66	

* As reported at pool time at 3.5 percent butterfat, 2.99 percent protein, and 5.69 percent other solids.

** Simple average.

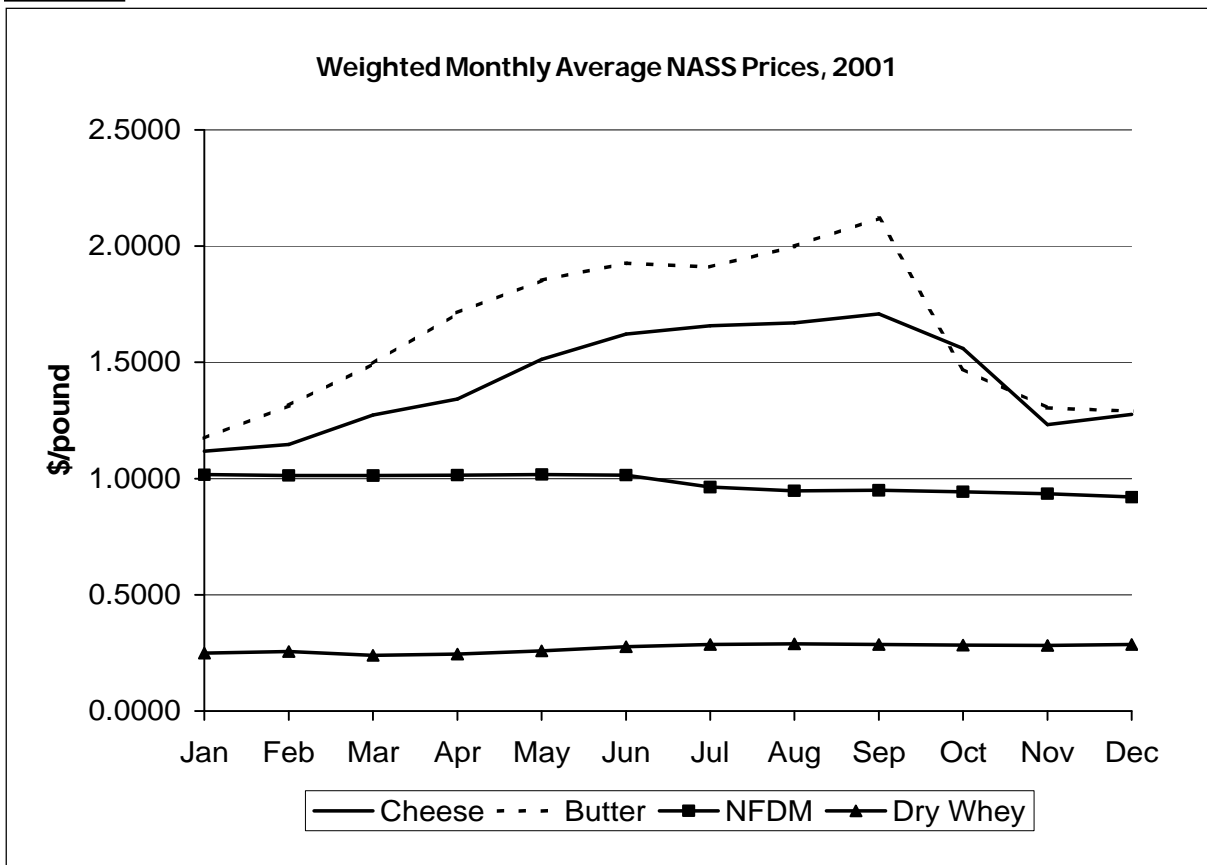
7 Weighted Monthly Average NASS Prices*, 2001

	Cheese					
	40-pound Blocks	Barrels**	Average	Butter	NFDM	Dry Whey
	\$/lb					
January	1.0991	1.1017	1.1180	1.1725	1.0165	0.2484
February	1.1077	1.1436	1.1467	1.3143	1.0137	0.2561
March	1.2434	1.2658	1.2737	1.4942	1.0127	0.2406
April	1.3359	1.3173	1.3423	1.7126	1.0145	0.2446
May	1.4885	1.5036	1.5129	1.8527	1.0180	0.2590
June	1.6058	1.6035	1.6211	1.9263	1.0148	0.2764
July	1.6551	1.6293	1.6573	1.9094	0.9634	0.2862
August	1.6690	1.6395	1.6693	1.9990	0.9473	0.2886
September	1.7107	1.6768	1.7085	2.1198	0.9497	0.2871
October	1.5744	1.5178	1.5591	1.4701	0.9441	0.2835
November	1.2354	1.1995	1.2322	1.3040	0.9349	0.2823
December	1.2733	1.2485	1.2762	1.2894	0.9199	0.2868
Simple Average	1.4165	1.4039	1.4264	1.6304	0.9791	0.2700

* Reported by National Agricultural Statistics Service (NASS).

** Reported at 38% moisture.

Figure 2



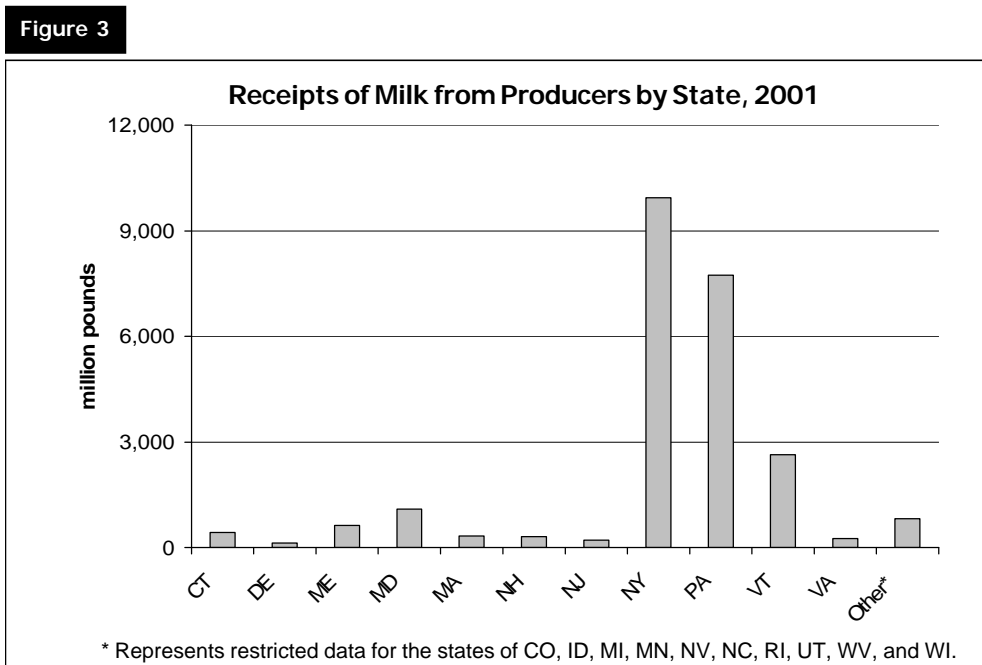
8 Receipts of Milk from Producers by State*, 2001

	Connecticut	Delaware	Maine	Maryland	Massachusetts	New Hampshire	New Jersey
	thousand pounds						
January	38,884	11,385	41,044	91,735	27,947	25,433	18,821
February	36,123	10,909	48,378	85,831	25,661	24,633	17,359
March	39,893	12,297	53,382	103,666	28,647	27,374	18,672
April	38,089	11,264	52,481	94,944	27,743	26,708	17,579
May	39,029	11,984	56,373	100,962	29,604	27,878	19,041
June	36,115	10,683	54,889	89,805	28,040	26,101	18,324
July	36,210	10,859	55,932	96,164	28,502	26,384	18,531
August	33,865	9,169	54,781	82,660	27,770	25,421	17,740
September	32,957	9,081	52,124	83,765	26,624	24,663	17,102
October	34,422	9,597	53,046	87,068	27,079	25,422	17,346
November	34,136	10,348	51,251	81,923	26,206	25,049	16,933
December	36,525	11,236	54,675	93,227	28,053	27,026	18,221
Total	436,248	128,812	628,356	1,091,750	331,876	312,092	215,669
% of Total	1.8	0.5	2.6	4.4	1.3	1.3	0.9

	New York	Pennsylvania	Vermont	Virginia	West Virginia	Other States**	All States
	thousand pounds						
January	825,756	651,544	221,456	26,036	5,235	63,955	2,049,231
February	748,327	609,595	200,949	21,981	4,777	63,319	1,897,842
March	851,334	682,747	223,889	24,288	4,897	83,190	2,154,276
April	826,267	614,098	218,785	22,977	3,587	93,816	2,048,338
May	859,186	686,033	232,154	21,269	4,213	107,938	2,195,664
June	831,137	621,612	222,698	19,192	**	107,861	2,066,457
July	839,041	657,797	226,552	21,119	2,955	105,260	2,125,306
August	843,890	632,199	219,480	20,072	2,684	66,103	2,035,834
September	843,708	623,218	213,901	17,354	2,247	28,693	1,975,437
October	810,101	655,115	219,892	18,667	2,436	26,641	1,986,832
November	807,445	635,990	213,689	18,997	2,243	13,329	1,937,539
December	855,142	672,007	226,925	25,461	2,766	25,810	2,077,074
Total	9,941,334	7,741,955	2,640,370	257,413	38,040	785,915	24,549,830
% of Total	40.5	31.5	10.8	1.0	0.2	3.2	100.0

* As reported by handlers at time of calculation of monthly uniform price.

** Represents restricted data for the states of Colorado, Idaho, Michigan, Minnesota, Nevada, North Carolina, Rhode Island, Utah, West Virginia, and Wisconsin.



9 Number of Producers by State*, 2001

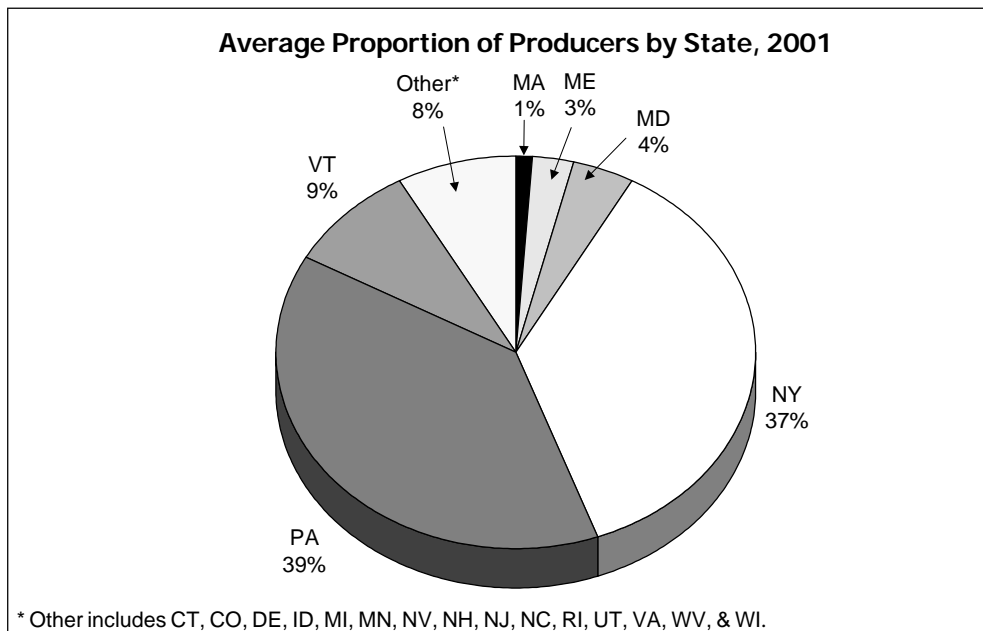
	Connecticut	Delaware	Maine	Maryland	Massachusetts	New Hampshire	New Jersey
January	209	85	384	678	243	163	153
February	207	84	451	671	242	170	149
March	206	84	453	676	245	167	143
April	204	84	457	673	243	167	146
May	202	82	456	664	241	166	144
June	199	82	453	667	241	163	151
July	199	83	448	664	242	164	150
August	195	81	449	653	244	166	144
September	197	80	444	651	239	168	144
October	193	79	436	645	240	168	141
November	194	80	436	647	237	167	140
December	195	80	430	646	238	167	140
Average	200	82	441	661	241	166	145

	New York	Pennsylvania	Vermont	Virginia	West Virginia	Other States**	All States
January	6,325	6,632	1,492	218	35	481	17,098
February	6,361	6,638	1,478	177	35	491	17,154
March	6,334	6,742	1,476	178	35	640	17,379
April	6,309	6,659	1,470	148	28	704	17,292
May	6,315	6,539	1,472	145	29	824	17,279
June	6,259	6,406	1,466	161	**	867	17,115
July	6,410	6,755	1,462	171	23	849	17,620
August	6,308	6,746	1,460	189	23	485	17,143
September	6,348	6,873	1,464	158	20	210	16,996
October	6,322	6,943	1,460	172	21	188	17,008
November	6,340	6,956	1,453	179	25	106	16,960
December	6,315	6,814	1,449	206	24	237	16,941
Average	6,329	6,725	1,467	175	27	507	17,165

* As reported by handlers at time of calculation of monthly uniform price.

** Represents restricted data for the states of Colorado, Idaho, Michigan, Minnesota, Nevada, North Carolina, Rhode Island, Utah, West Virginia, and Wisconsin.

Figure 4



10 Daily Average Output of Producer Milk per Farm by State*, 2001

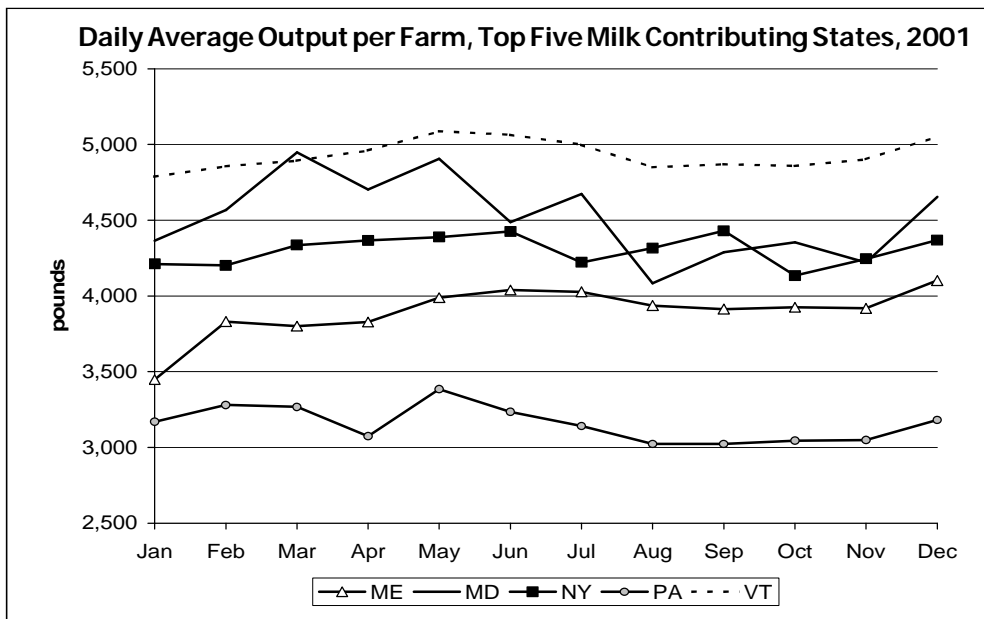
	Connecticut	Delaware	Maine	Maryland	Massachusetts	New Hampshire	New Jersey
	pounds						
January	6,002	4,321	3,448	4,365	3,710	5,033	3,968
February	6,232	4,638	3,831	4,568	3,787	5,175	4,161
March	6,247	4,723	3,801	4,947	3,772	5,288	4,212
April	6,224	4,470	3,828	4,703	3,806	5,331	4,013
May	6,233	4,715	3,988	4,905	3,963	5,417	4,265
June	6,049	4,343	4,039	4,488	3,878	5,338	4,045
July	5,870	4,220	4,027	4,672	3,799	5,190	3,985
August	5,602	3,652	3,936	4,083	3,671	4,940	3,974
September	5,577	3,784	3,913	4,289	3,713	4,894	3,959
October	5,753	3,919	3,925	4,355	3,640	4,881	3,968
November	5,865	4,312	3,918	4,221	3,686	5,000	4,032
December	6,042	4,531	4,102	4,655	3,802	5,220	4,198
Yearly Average	5,975	4,302	3,896	4,521	3,769	5,142	4,065

	New York	Pennsylvania	Vermont	Virginia	West Virginia	Other States**	All States
	pounds						
January	4,211	3,169	4,788	3,853	4,825	4,289	3,866
February	4,202	3,280	4,856	4,435	4,874	4,606	3,951
March	4,336	3,267	4,893	4,402	4,513	4,193	3,999
April	4,366	3,074	4,961	5,175	4,271	4,442	3,949
May	4,389	3,384	5,088	4,732	4,687	4,226	4,099
June	4,426	3,235	5,064	3,974	**	4,147	4,025
July	4,222	3,141	4,999	3,984	4,144	3,999	3,891
August	4,316	3,023	4,849	3,426	3,765	4,397	3,831
September	4,430	3,023	4,870	3,661	3,746	4,554	3,874
October	4,134	3,044	4,858	3,501	3,742	4,571	3,768
November	4,245	3,048	4,902	3,538	2,991	4,192	3,808
December	4,368	3,181	5,052	3,987	3,718	3,513	3,955
Yearly Average	4,304	3,156	4,932	4,056	4,116	4,261	3,918

* As reported by handlers at time of calculation of monthly uniform price.

** Represents restricted data for the states of Colorado, Idaho, Michigan, Minnesota, Nevada, North Carolina, Rhode Island, Utah, West Virginia, and Wisconsin.

Figure 5



11 Producer Receipts by State and County*, 2001

State and county	January		February		March		April	
	No. of	Volume	No. of	Volume	No. of	Volume	No. of	Volume
	producers	of milk 1,000 lbs	producers	of milk 1,000 lbs	producers	of milk 1,000 lbs	producers	of milk 1,000 lbs
Connecticut								
Hartford	18	2,021	18	1,873	18	2,108	19	2,342
Litchfield	47	7,605	46	7,083	45	7,949	46	7,481
Middlesex	5	712	5	649	5	693	5	665
New Haven	10	1,367	10	1,265	9	1,302	10	1,332
New London	51	9,295	51	8,720	51	9,704	50	9,366
Tolland	23	7,010	23	6,372	23	6,896	22	6,601
Windham	50	10,771	49	9,969	49	11,120	50	10,651
All Other**	2	160	2	150	2	168	2	160
Total/Average	206	38,941	204	36,081	202	39,940	204	38,598
Delaware								
Kent	62	6,477	62	6,231	65	8,343	65	8,042
New Castle	9	1,147	8	1,108	9	1,272	9	1,205
Sussex	13	3,720	13	3,550	13	3,963	13	3,736
Total/Average	84	11,345	83	10,889	87	13,578	87	12,983
Maine								
Androscoggin	27	2,713	39	4,586	40	5,022	40	4,936
Aroostook	8	662	9	588	8	645	8	691
Cumberland	10	638	22	1,581	23	1,768	23	1,723
Franklin	24	893	30	1,339	31	1,474	30	1,497
Kennebec	61	9,477	74	11,085	74	12,168	74	11,847
Knox	7	450	7	433	7	502	7	482
Lincoln	12	1,015	10	794	10	874	10	990
Oxford	15	1,324	17	1,395	17	1,565	16	1,189
Penobscot	74	10,742	75	9,868	75	10,872	78	10,608
Piscataquis	22	2,099	23	1,920	23	2,084	23	2,086
Sagadahoc	7	698	7	633	7	689	7	669
Somerset	55	5,720	60	7,952	60	8,875	61	8,611
Waldo	44	3,446	56	4,807	56	5,257	58	5,274
Washington	4	140	3	115	3	127	4	139
York	13	1,027	18	1,281	18	1,459	18	1,430
Total/Average	383	41,044	450	48,378	452	53,382	457	52,173
Maryland								
Baltimore	41	6,743	42	6,881	41	6,398	26	4,515
Caroline	25	3,456	26	3,264	29	4,785	21	4,055
Carroll	146	18,223	145	16,664	144	20,004	142	19,022
Cecil	33	4,683	32	4,258	31	4,797	20	2,996
Charles	0	0	0	0	0	0	3	121
Frederick	124	17,861	126	16,781	128	24,368	135	25,209
Garrett	13	579	7	494	9	567	9	591
Harford	35	5,491	33	5,061	33	5,651	32	5,343
Kent	32	6,433	32	6,152	32	6,680	31	6,354
Montgomery	12	1,735	12	1,630	12	1,826	12	1,816
Queen Anne's	14	2,184	14	2,053	14	2,270	14	2,201
St. Mary's	24	789	24	764	24	910	22	754
Talbot	5	626	5	575	5	622	5	640
Washington	160	21,024	159	19,540	158	22,038	161	22,289
All Other**	13	1,817	12	1,707	12	1,831	11	1,856
Total/Average	677	91,643	669	85,822	672	102,746	644	97,762
Massachusetts								
Berkshire	24	4,743	24	4,407	24	4,940	24	4,731
Bristol	32	3,275	32	3,001	32	3,399	32	3,479
Essex	6	580	6	545	6	584	6	569
Franklin	57	6,214	57	5,706	57	6,403	56	6,211
Hampden	18	1,844	18	1,666	18	1,817	19	1,778
Hampshire	31	3,452	31	3,064	32	3,408	30	3,345
Middlesex	7	904	7	858	7	973	7	919
Plymouth	9	1,283	8	1,161	9	1,314	9	1,201

(Continued on following page)

11 **Producer Receipts by State and County*, 2001** (Continued)

State and county	January		February		March		April	
	No. of producers	Volume of milk 1,000 lbs	No. of producers	Volume of milk 1,000 lbs	No. of producers	Volume of milk 1,000 lbs	No. of producers	Volume of milk 1,000 lbs
Massachusetts (continued)								
Worcester	51	5,262	52	4,839	54	5,387	55	5,212
All Other**	2	72	2	62	2	67	2	66
Total/Average	237	27,628	237	25,310	241	28,293	240	27,511
New Hampshire								
Belknap	5	593	5	567	5	619	5	616
Carroll	4	449	4	433	4	502	4	458
Cheshire	21	4,262	21	3,918	21	4,378	21	4,266
Coos	21	4,298	21	3,859	21	4,333	21	4,330
Grafton	51	6,054	49	5,346	48	5,867	48	5,664
Hillsborough	9	668	9	635	9	748	9	731
Merrimack	22	3,262	22	3,033	22	3,494	22	3,367
Rockingham	11	1,811	11	1,677	11	1,913	11	1,846
Strafford	6	1,562	6	1,482	6	1,663	6	1,592
Sullivan	22	3,807	22	3,598	23	3,905	20	3,783
Total/Average	172	26,765	170	24,550	170	27,421	167	26,652
New Jersey								
Burlington	9	2,699	9	2,513	9	2,840	9	2,742
Cumberland	4	555	4	513	4	598	4	595
Gloucester	8	1,449	8	1,349	8	1,610	8	1,613
Hunterdon	13	995	13	916	13	1,034	13	1,029
Salem	30	5,341	29	4,918	29	5,408	29	5,265
Somerset	3	530	3	485	3	545	3	552
Sussex	37	3,701	36	3,420	30	3,104	31	3,257
Warren	45	3,149	43	2,874	42	3,148	45	3,141
All Other**	6	650	6	605	6	664	6	589
Total/Average	155	19,070	151	17,593	144	18,950	148	18,784
New York								
Albany	16	1,799	16	1,688	16	1,833	16	1,752
Allegany	104	9,667	100	8,722	100	9,734	101	9,610
Broome	70	10,911	70	10,023	70	11,388	71	10,956
Cattaraugus	71	7,585	71	7,199	73	9,411	71	8,430
Cayuga	153	43,233	145	33,925	148	44,105	143	33,853
Chemung	32	3,618	32	3,417	33	3,889	32	3,759
Chenango	288	25,324	281	22,955	286	25,875	287	25,188
Clinton	159	26,724	159	24,640	159	28,335	159	28,095
Columbia	56	12,926	56	11,748	56	13,065	57	12,741
Cortland	169	20,378	167	18,482	171	21,034	170	20,764
Delaware	203	18,866	203	17,267	206	19,476	206	18,845
Dutchess	33	4,448	33	4,045	34	4,339	34	4,055
Erie	66	9,246	66	8,924	65	10,053	65	9,884
Essex	20	2,708	20	2,366	20	2,589	21	2,521
Franklin	204	23,019	201	20,834	201	23,643	202	23,866
Fulton	49	5,162	50	4,669	48	5,148	45	4,743
Genesee	90	32,139	90	29,536	92	35,214	87	29,242
Greene	38	2,564	38	2,351	38	2,535	37	2,544
Herkimer	216	20,607	216	18,813	218	21,376	217	20,988
Jefferson	334	44,173	337	40,465	337	45,966	338	45,679
Lewis	319	33,859	318	30,819	319	35,129	317	34,983
Livingston	77	23,508	75	20,004	75	22,655	76	20,340
Madison	250	29,387	251	26,837	251	29,387	250	28,350
Monroe	23	5,307	23	5,082	23	5,752	23	5,652
Montgomery	228	24,440	225	21,324	225	25,052	222	23,501
Niagara	6	739	6	1,231	6	1,420	6	1,393
Oneida	358	32,508	355	29,807	357	33,880	358	33,765
Onondaga	118	26,880	118	24,835	120	28,293	121	27,627
Ontario	113	22,885	113	21,901	115	24,756	107	22,190
Orange	92	11,159	93	10,280	95	11,429	93	11,176
Orleans	17	2,326	17	2,630	18	2,939	17	2,890

(Continued on following page)

11 **Producer Receipts by State and County*, 2001** (Continued)

State and county	January		February		March		April	
	No. of	Volume	No. of	Volume	No. of	Volume	No. of	Volume
	producers	of milk 1,000 lbs	producers	of milk 1,000 lbs	producers	of milk 1,000 lbs	producers	of milk 1,000 lbs
New York (continued)								
Oswego	83	5,488	78	4,941	77	5,714	80	5,671
Otsego	294	23,696	292	21,746	296	24,533	292	23,705
Rensselaer	90	15,719	89	14,463	91	15,933	87	14,056
Saratoga	53	10,301	53	9,394	53	10,282	52	9,913
Schenectady	11	1,383	11	1,294	11	1,411	11	1,321
Schoharie	113	9,696	113	8,896	111	9,942	111	9,498
Schuyler	30	4,399	30	4,156	31	4,638	30	4,539
Seneca	87	8,890	87	8,075	86	9,157	87	9,028
St. Lawrence	415	46,723	407	41,897	409	47,167	410	46,968
Steuben	257	26,659	255	24,428	256	27,499	258	26,675
Sullivan	52	5,121	51	4,504	51	4,965	51	4,990
Tioga	105	12,786	103	11,598	102	12,858	101	11,133
Tompkins	81	13,773	81	12,646	80	14,150	82	13,572
Ulster	7	565	7	496	7	654	7	663
Washington	198	31,570	198	28,554	194	30,171	195	29,186
Wayne	79	8,246	78	7,571	77	8,505	77	8,229
Wyoming	141	48,705	139	43,733	138	49,741	129	41,978
Yates	196	13,886	197	12,782	196	14,334	192	13,589
All Other**	4	538	4	517	4	613	4	607
Total/Average	6,268	826,240	6,218	748,509	6,245	851,968	6,205	804,700
Pennsylvania								
Adams	60	8,453	60	7,834	63	13,899	63	13,807
Allegheny	14	934	13	832	14	989	14	1,036
Bedford	140	14,261	138	13,177	140	13,720	122	11,242
Berks	300	35,138	300	32,830	301	36,768	246	30,999
Blair	132	23,487	135	25,431	133	24,680	114	20,636
Bradford	415	35,128	414	32,617	416	37,151	409	36,308
Bucks	24	3,175	25	2,990	25	3,320	25	3,302
Cambria	11	1,493	10	1,334	10	1,467	10	1,091
Centre	134	10,906	141	11,873	141	12,367	138	11,922
Chester	338	33,252	339	30,684	345	34,927	337	33,875
Clearfield	9	575	9	560	9	663	9	622
Clinton	82	7,017	81	6,767	85	7,987	85	6,718
Columbia	37	3,895	39	3,640	41	4,275	42	4,110
Crawford	8	1,017	8	921	8	960	8	971
Cumberland	155	18,706	153	17,601	154	18,200	204	24,522
Dauphin	68	7,520	72	7,378	73	8,421	59	6,335
Fayette	24	1,798	24	1,644	24	1,036	16	668
Franklin	465	66,257	461	61,142	465	70,794	407	61,942
Fulton	47	4,771	46	4,599	46	4,932	41	4,870
Huntingdon	117	12,585	118	12,755	118	17,669	99	16,072
Indiana	5	347	5	285	6	323	5	275
Juniata	132	11,009	133	10,237	134	11,538	134	11,183
Lackawanna	34	1,673	34	1,592	34	1,858	34	1,807
Lancaster	1,914	165,233	1,912	152,359	1,917	169,242	1,818	154,849
Lebanon	273	34,668	273	32,420	277	36,524	248	32,385
Lehigh	14	2,304	14	2,080	14	2,224	11	1,571
Luzerne	13	927	14	871	13	996	13	953
Lycoming	89	7,013	89	6,461	90	7,500	92	7,442
McKean	17	1,027	17	962	16	1,019	14	977
Mifflin	180	18,229	179	16,504	189	18,853	122	12,238
Montgomery	25	2,047	25	1,910	25	2,126	25	2,150
Montour	32	3,336	33	3,057	32	3,510	32	3,180
Northampton	35	3,356	35	3,047	35	3,449	34	2,985
Northumberland	43	4,595	45	4,253	46	4,774	45	4,657
Perry	120	13,496	120	12,564	119	14,024	121	13,716
Potter	35	4,883	35	4,446	34	4,959	34	4,875
Schuylkill	28	2,021	27	1,832	27	2,018	8	534

(Continued on following page)

11 **Producer Receipts by State and County*, 2001** (Continued)

State and county	January		February		March		April	
	No. of producers	Volume of milk 1,000 lbs	No. of producers	Volume of milk 1,000 lbs	No. of producers	Volume of milk 1,000 lbs	No. of producers	Volume of milk 1,000 lbs
Pennsylvania (continued)								
Snyder	79	6,074	78	5,527	78	6,171	73	5,422
Somerset	52	7,019	52	6,410	55	7,238	53	6,102
Sullivan	19	2,285	19	2,052	19	2,290	19	2,178
Susquehanna	179	14,071	182	12,598	177	14,083	175	13,974
Tioga	203	13,882	200	12,871	203	14,968	205	14,930
Union	140	11,702	137	10,699	140	12,135	136	11,604
Washington	4	2,054	5	2,070	4	363	4	342
Wayne	124	7,776	122	7,124	123	8,151	123	8,152
Wyoming	116	8,156	112	7,415	113	8,367	113	8,236
York	123	12,187	122	11,276	124	12,629	121	12,216
All Other**	10	435	10	410	10	456	12	624
Total/Average	6,618	652,175	6,615	609,942	6,665	686,008	6,272	630,605
Rhode Island								
Newport	6	514	6	485	6	513	6	485
Washington	8	769	8	725	8	830	8	793
All Other**	6	379	6	345	6	380	5	371
Total/Average	20	1,663	20	1,556	20	1,723	19	1,649
Vermont								
Addison	231	51,279	228	46,920	227	52,510	235	51,730
Bennington	18	2,516	18	2,337	18	2,628	18	2,551
Caledonia	114	12,756	113	11,440	113	12,629	113	12,242
Chittenden	75	9,128	72	8,220	73	9,084	75	9,171
Essex	29	4,446	29	4,057	30	4,544	29	4,384
Franklin	337	59,110	337	53,884	336	60,145	333	59,068
Grand Isle	29	4,632	29	4,357	29	4,863	28	4,564
Lamoille	61	6,036	60	5,571	60	6,258	61	6,265
Orange	124	13,800	122	12,488	122	13,869	123	13,515
Orleans	208	28,393	206	25,541	206	28,109	203	27,732
Rutland	126	11,928	124	10,846	125	12,005	123	11,557
Washington	51	6,706	51	6,148	50	6,743	51	6,379
Windham	35	5,563	36	5,167	36	5,753	36	5,588
Windsor	52	4,182	52	3,977	51	4,566	51	4,398
Total/Average	1,490	220,477	1,477	200,953	1,476	223,705	1,479	219,145
Virginia								
Amelia	4	833	4	778	4	859	4	790
Augusta	28	3,251	16	1,961	19	1,524	11	2,386
Bedford	3	797	3	876	3	1,008	3	882
Clarke	3	1,135	3	993	3	813	5	1,080
Franklin	9	708	12	548	11	335	8	451
Greene	3	34	3	492	3	36	0	0
Harrisonburg City	26	2,931	23	2,361	21	2,290	20	2,826
Powhatan	3	685	3	668	3	751	3	703
Rockingham	92	9,549	70	7,616	74	7,403	57	7,832
Shenandoah	10	1,421	9	1,297	9	1,479	11	1,432
Staunton	4	608	4	561	4	615	4	624
Winchester City	3	137	3	124	3	132	3	133
All Other**	30	3,995	25	3,817	26	3,747	33	4,104
Total/Average	218	26,084	178	22,092	183	20,990	162	23,241
West Virginia								
Berkeley	14	1,421	14	1,250	14	1,399	10	1,128
Jefferson	18	3,538	18	3,273	18	3,371	11	1,953
All Other*	3	277	3	254	3	126	2	215
Total/Average	35	5,235	35	4,777	35	4,896	23	3,296
Other States***								
	491	64,507	497	63,124	614	85,314	767	91,881
Grand Total/Average	17,054	2,052,817	17,004	1,899,575	17,206	2,158,916	16,874	2,048,980

* Producer receipts data based on audited producer payroll reports.

** Counties with less than 3 producers are restricted and have been consolidated into the "all other" category. Some counties had more than 3 producers, but had less than 3 handlers pooling milk during the month.

*** Represents restricted data for the states of Georgia, Idaho, Michigan, Minnesota, North Carolina, North Dakota, Nevada, South Carolina, South Dakota, Tennessee, Utah, and Wisconsin.

11 **Producer Receipts by State and County*, 2001** (Continued)

State and county	May		June		July		August	
	No. of	Volume	No. of	Volume	No. of	Volume	No. of	Volume
	producers	of milk 1,000 lbs	producers	of milk 1,000 lbs	producers	of milk 1,000 lbs	producers	of milk 1,000 lbs
Connecticut								
Hartford	19	2,365	17	2,051	16	1,903	15	1,728
Litchfield	47	7,645	48	7,298	49	7,392	47	7,006
Middlesex	4	658	4	564	4	561	4	535
New Haven	10	1,411	10	1,300	10	1,336	10	1,248
New London	51	9,497	51	8,751	50	8,740	50	8,194
Tolland	21	7,073	21	6,679	21	6,676	21	6,377
Windham	48	10,913	48	10,031	48	10,035	48	9,406
All Other**	2	162	2	154	2	159	2	141
Total/Average	202	39,724	201	36,828	200	36,803	197	34,634
Delaware								
Kent	61	7,003	60	6,264	60	6,205	63	6,059
New Castle	9	1,192	9	1,102	9	1,156	9	1,050
Sussex	12	3,724	12	3,314	12	3,191	11	2,093
Total/Average	82	11,920	81	10,680	81	10,551	83	9,202
Maine								
Androscoggin	40	5,159	39	5,023	40	5,174	38	4,899
Aroostook	8	748	8	671	8	751	8	847
Cumberland	22	1,776	21	1,684	20	1,698	20	1,623
Franklin	32	1,655	32	1,701	31	1,554	28	1,525
Kennebec	74	12,720	73	12,354	73	12,594	73	12,298
Knox	7	505	7	506	7	550	7	506
Lincoln	12	1,223	14	1,240	14	1,274	14	1,282
Oxford	16	1,260	16	1,253	16	1,305	16	1,274
Penobscot	76	11,351	76	10,924	73	11,452	75	11,272
Piscataquis	23	2,257	23	2,242	23	2,261	24	2,103
Sagadahoc	7	734	7	726	7	729	7	687
Somerset	61	9,128	60	8,898	60	9,088	60	8,935
Waldo	57	5,831	56	5,681	56	5,623	56	5,759
Washington	3	163	3	169	3	170	3	175
York	18	1,499	18	1,467	18	1,507	18	1,480
Total/Average	456	56,009	453	54,539	449	55,731	447	54,665
Maryland								
Baltimore	27	5,589	25	4,862	25	4,893	26	4,730
Caroline	21	4,205	20	3,015	20	2,921	20	2,697
Carroll	144	20,486	144	17,877	146	18,779	143	17,185
Cecil	25	4,278	30	4,667	30	4,695	30	4,490
Charles	3	141	3	134	3	118	3	109
Frederick	135	26,759	133	18,926	133	20,666	132	18,524
Garrett	6	196	6	198	9	586	9	575
Harford	32	5,516	33	4,959	34	5,001	34	4,808
Kent	31	6,490	31	5,863	31	5,904	30	5,611
Montgomery	12	1,954	12	1,701	11	1,691	11	1,612
Queen Anne's	14	2,258	14	2,118	14	2,140	14	2,016
St. Mary's	22	748	22	636	22	629	22	667
Talbot	5	639	5	580	5	552	5	555
Washington	161	23,048	161	21,388	161	20,990	162	20,324
All Other**	10	1,900	11	1,746	12	1,745	11	1,617
Total/Average	648	104,207	650	88,670	656	91,310	652	85,522
Massachusetts								
Berkshire	24	5,127	25	4,909	25	5,038	25	4,888
Bristol	31	3,727	31	3,418	31	3,421	32	3,189
Essex	6	608	6	558	5	533	5	489
Franklin	57	6,668	57	6,428	57	6,606	57	6,393
Hampden	19	1,903	19	1,785	19	1,799	19	1,774
Hampshire	30	3,583	29	3,380	29	3,397	28	3,271
Middlesex	7	935	7	872	7	915	7	814
Plymouth	8	1,237	8	1,210	8	1,237	8	1,094

(Continued on following page)

11 **Producer Receipts by State and County*, 2001** (Continued)

State and county	May		June		July		August	
	No. of	Volume	No. of	Volume	No. of	Volume	No. of	Volume
	producers	of milk 1,000 lbs	producers	of milk 1,000 lbs	producers	of milk 1,000 lbs	producers	of milk 1,000 lbs
Massachusetts (continued)								
Worcester	52	5,554	52	5,262	52	5,365	52	5,236
All Other**	2	71	2	66	3	85	3	95
Total/Average	236	29,411	236	27,886	236	28,396	236	27,242
New Hampshire								
Belknap	5	636	5	594	5	610	5	588
Carroll	4	442	4	420	4	417	4	364
Cheshire	21	4,420	21	4,217	21	4,375	21	4,271
Coos	21	4,681	21	4,498	21	4,573	21	4,473
Grafton	47	5,872	46	5,471	47	5,436	48	5,440
Hillsborough	9	733	9	697	9	720	9	645
Merrimack	22	3,476	23	3,312	22	3,343	23	3,193
Rockingham	12	1,919	11	1,739	11	1,700	11	1,667
Strafford	6	1,669	6	1,595	6	1,651	6	1,497
Sullivan	20	3,920	19	3,574	19	3,510	20	3,371
Total/Average	167	27,768	165	26,117	165	26,333	168	25,509
New Jersey								
Burlington	9	2,892	9	2,625	10	2,637	10	2,511
Cumberland	4	601	4	541	4	538	4	463
Gloucester	8	1,645	8	1,526	8	1,545	8	1,439
Hunterdon	13	1,167	13	1,098	13	1,115	13	1,061
Salem	29	5,364	32	4,882	33	5,018	29	4,805
Somerset	3	568	3	525	3	527	3	509
Sussex	30	3,050	34	3,481	34	3,462	31	3,374
Warren	45	3,461	45	3,364	45	3,455	43	3,304
All Other**	6	596	6	570	6	624	6	643
Total/Average	147	19,345	154	18,612	156	18,922	147	18,109
New York								
Albany	16	1,854	16	1,798	16	1,796	16	1,792
Allegany	117	10,730	103	10,588	119	11,477	120	10,943
Broome	72	11,409	70	10,619	68	10,810	67	10,208
Cattaraugus	74	9,036	70	8,959	125	13,530	124	13,479
Cayuga	142	34,703	143	34,111	160	36,996	161	44,454
Chemung	32	3,978	30	3,663	30	3,554	30	3,494
Chenango	290	27,349	290	26,435	288	26,683	295	26,074
Clinton	159	29,721	157	28,559	154	29,007	155	27,813
Columbia	57	13,785	58	13,021	58	13,228	58	12,743
Cortland	168	22,314	168	21,362	167	21,833	166	21,595
Delaware	202	19,794	202	19,032	202	18,683	202	17,935
Dutchess	34	4,172	32	3,864	31	3,812	31	3,819
Erie	65	10,323	65	9,914	75	11,510	75	11,145
Essex	22	2,735	22	2,585	22	2,587	20	2,513
Franklin	202	25,847	201	24,926	198	25,255	198	24,824
Fulton	49	5,097	50	5,257	50	5,212	50	5,137
Genesee	86	30,181	85	28,600	83	22,092	83	21,822
Greene	37	2,745	37	2,556	36	2,437	37	2,408
Herkimer	220	22,233	213	21,361	213	21,529	213	21,192
Jefferson	334	49,507	331	48,588	337	49,625	330	48,833
Lewis	314	37,969	312	37,752	315	38,941	313	37,819
Livingston	75	21,300	75	20,659	82	21,899	82	25,434
Madison	251	30,292	248	29,223	245	29,512	248	28,670
Monroe	24	6,097	24	5,825	23	3,553	23	3,541
Montgomery	220	25,246	221	24,579	223	26,280	222	25,438
Niagara	6	1,464	6	1,306	6	1,312	6	1,350
Oneida	354	36,606	350	35,858	353	32,479	344	31,096
Onondaga	121	28,838	122	28,431	125	27,357	125	27,049
Ontario	109	23,655	112	22,499	112	21,120	115	22,167
Orange	94	11,959	93	11,113	93	11,208	94	11,083
Orleans	17	3,081	16	2,947	16	2,971	16	2,979

(Continued on following page)

11 **Producer Receipts by State and County*, 2001** (Continued)

State and county	May		June		July		August	
	No. of	Volume	No. of	Volume	No. of	Volume	No. of	Volume
	producers	of milk 1,000 lbs	producers	of milk 1,000 lbs	producers	of milk 1,000 lbs	producers	of milk 1,000 lbs
New York (continued)								
Oswego	81	6,098	80	6,082	86	6,195	83	5,807
Otsego	294	25,670	290	25,171	291	25,392	292	24,506
Rensselaer	88	14,920	85	14,359	85	15,704	86	15,294
Saratoga	53	10,671	52	10,235	51	10,439	51	10,360
Schenectady	11	1,357	11	1,374	11	1,434	11	1,349
Schoharie	110	10,129	110	9,845	110	9,826	107	9,506
Schuyler	30	4,823	29	4,619	28	4,703	30	4,623
Seneca	87	9,552	87	9,175	87	9,074	87	8,830
St. Lawrence	410	51,359	412	50,833	416	52,708	415	51,565
Steuben	258	28,630	260	28,254	270	29,570	271	28,851
Sullivan	51	5,391	51	5,136	51	5,053	51	4,875
Tioga	101	11,759	103	12,440	101	12,444	101	11,920
Tompkins	80	14,678	79	14,027	79	12,636	79	12,227
Ulster	7	720	7	664	7	669	7	554
Washington	197	30,791	194	29,425	196	29,783	197	28,943
Wayne	76	8,851	76	9,660	79	10,129	77	11,854
Wyoming	132	44,691	123	39,912	135	41,876	139	50,461
Yates	193	14,636	194	13,937	194	14,135	195	13,776
All Other**	4	626	4	593	5	762	3	529
Total/Average	6,226	859,372	6,169	831,729	6,307	840,822	6,301	844,680
Pennsylvania								
Adams	60	8,959	60	8,424	59	7,266	59	7,239
Allegheny	14	1,182	14	1,170	14	1,173	14	1,126
Bedford	118	12,746	150	13,796	139	14,745	148	14,947
Berks	246	32,561	243	29,274	294	33,795	292	33,026
Blair	124	27,321	131	23,162	128	20,916	131	17,084
Bradford	414	38,755	409	36,804	410	37,361	410	36,731
Bucks	25	3,457	25	3,158	25	3,219	25	3,137
Cambria	8	1,092	10	1,477	10	1,470	10	1,475
Centre	179	17,909	134	12,234	134	12,522	138	12,047
Chester	337	35,521	336	33,028	334	30,904	336	30,192
Clearfield	9	665	9	662	9	711	9	658
Clinton	99	8,530	87	6,962	87	8,171	86	7,937
Columbia	41	4,385	42	4,179	42	4,188	42	4,078
Crawford	8	1,025	8	947	8	959	6	760
Cumberland	203	27,601	212	24,582	213	25,266	212	20,794
Dauphin	67	7,605	67	7,020	72	7,357	72	6,823
Fayette	18	1,182	14	848	22	1,832	22	1,678
Franklin	411	65,245	427	59,882	440	62,198	432	57,763
Fulton	42	5,175	45	4,670	41	3,852	43	4,394
Huntingdon	106	13,627	110	12,056	119	13,341	120	12,745
Indiana	4	335	4	346	4	331	5	322
Juniata	140	12,381	140	11,389	142	11,667	143	11,029
Lackawanna	34	1,968	33	1,830	33	1,812	31	1,696
Lancaster	1,822	164,333	1,810	151,433	1,949	163,976	1,949	157,328
Lebanon	249	33,492	250	31,627	280	36,045	287	34,911
Lehigh	11	1,638	11	1,504	14	2,167	14	2,135
Luzerne	12	985	12	955	12	981	12	919
Lycoming	127	10,377	95	7,733	97	7,911	90	7,256
McKean	14	1,100	14	1,024	20	1,369	20	1,313
Mifflin	120	12,998	117	11,347	193	18,521	193	18,549
Montgomery	27	2,364	25	2,117	25	2,140	25	2,066
Montour	33	3,510	32	3,131	33	3,348	31	3,120
Northampton	34	3,100	34	2,923	35	3,276	35	3,143
Northumberland	52	5,550	46	4,741	48	4,882	48	4,693
Perry	121	14,301	121	13,672	120	13,887	122	13,122
Potter	35	5,665	34	5,012	51	7,773	50	7,376
Schuylkill	8	577	8	527	27	1,962	27	1,916

(Continued on following page)

11 **Producer Receipts by State and County*, 2001** (Continued)

State and county	May		June		July		August	
	No. of	Volume	No. of	Volume	No. of	Volume	No. of	Volume
	producers	of milk 1,000 lbs	producers	of milk 1,000 lbs	producers	of milk 1,000 lbs	producers	of milk 1,000 lbs
Pennsylvania (continued)								
Snyder	73	5,733	70	5,278	82	6,624	82	6,240
Somerset	53	6,940	60	7,310	63	7,904	61	6,517
Sullivan	26	2,527	18	2,248	18	2,220	18	2,199
Susquehanna	174	15,008	173	14,228	172	14,228	170	13,724
Tioga	200	16,085	197	15,480	203	16,249	210	16,024
Union	173	14,877	138	11,457	141	12,071	141	11,463
Washington	5	2,241	4	366	3	310	3	309
Wayne	122	8,758	121	8,663	122	8,691	119	8,447
Wyoming	112	8,803	110	8,250	110	8,413	110	8,380
York	122	12,652	134	13,219	136	13,176	136	12,794
All Other**	11	670	12	693	12	707	13	710
Total/Average	6,443	683,510	6,356	622,840	6,745	663,886	6,752	632,335
Rhode Island								
Newport	6	569	6	534	6	542	6	539
Washington	8	840	8	727	8	734	8	703
All Other**	6	407	6	352	6	330	6	313
Total/Average	20	1,816	20	1,613	20	1,605	20	1,554
Vermont								
Addison	238	54,665	235	51,756	235	53,254	234	51,339
Bennington	18	2,734	16	2,592	16	2,671	16	2,501
Caledonia	112	13,046	113	12,533	113	12,677	112	12,290
Chittenden	75	10,105	75	9,932	74	10,230	74	10,028
Essex	30	4,679	30	4,464	30	4,410	30	4,325
Franklin	332	63,333	333	61,143	331	62,515	332	61,060
Grand Isle	27	4,745	27	4,552	27	4,547	26	4,348
Lamoille	60	6,424	59	6,093	59	6,080	59	5,943
Orange	121	14,071	121	13,331	122	13,339	121	12,707
Orleans	204	29,665	202	28,862	201	29,673	202	29,158
Rutland	124	12,065	122	11,373	122	11,272	121	10,892
Washington	51	6,542	51	6,327	51	6,395	50	6,155
Windham	36	5,913	36	5,580	36	5,513	36	5,255
Windsor	51	4,415	52	4,341	51	4,489	51	4,230
Total/Average	1,479	232,403	1,472	222,879	1,468	227,067	1,464	220,233
Virginia								
Amelia	4	763	4	688	4	682	4	703
Augusta	15	2,013	15	1,321	18	2,174	20	1,549
Bedford	3	890	3	715	3	533	3	459
Clarke	3	1,043	4	1,427	4	1,541	4	1,607
Franklin	8	503	10	646	10	475	11	424
Greene	0	0	0	0	3	337	3	441
Harrisonburg City	18	2,294	18	1,931	20	2,021	24	1,977
Powhatan	3	726	3	639	3	602	3	604
Rockingham	55	7,090	62	6,210	66	6,800	73	6,542
Shenandoah	8	1,474	10	1,435	11	1,516	10	1,494
Staunton	4	704	4	657	4	679	4	661
Winchester City	3	138	3	121	3	113	3	122
All Other**	26	3,893	26	3,499	27	3,836	34	3,603
Total/Average	150	21,531	162	19,289	176	21,308	196	20,186
West Virginia								
Berkeley	10	1,163	11	815	13	933	11	761
Jefferson	14	2,131	9	1,811	15	2,161	8	1,323
All Other**	1	81	2	136	3	296	3	259
Total/Average	25	3,375	22	2,762	31	3,390	22	2,343
Other States***								
	774	103,138	830	103,336	831	103,570	567	69,282
Grand Total/Average	17,055	2,193,527	16,971	2,067,781	17,521	2,129,694	17,252	2,045,498

* Producer receipts data based on audited producer payroll reports.

** Counties with less than 3 producers are restricted and have been consolidated into the "all other" category. Some counties had more than 3 producers, but had less than 3 handlers pooling milk during the month.

*** Represents restricted data for the states of Georgia, Idaho, Michigan, Minnesota, North Carolina, North Dakota, Nevada, South Carolina, South Dakota, Tennessee, Utah, and Wisconsin.

11 **Producer Receipts by State and County*, 2001** (Continued)

State and county	September		October		November		December	
	No. of	Volume	No. of	Volume	No. of	Volume	No. of	Volume
	producers	of milk 1,000 lbs	producers	of milk 1,000 lbs	producers	of milk 1,000 lbs	producers	of milk 1,000 lbs
Connecticut								
Hartford	16	1,627	14	1,645	15	1,663	15	1,811
Litchfield	46	6,729	46	6,977	47	6,951	48	7,516
Middlesex	4	519	4	538	4	552	4	634
New Haven	10	1,186	10	1,199	10	1,191	10	1,291
New London	51	8,124	51	8,571	51	8,381	51	8,935
Tolland	21	6,069	21	6,290	21	6,189	21	6,575
Windham	48	9,147	47	9,133	46	9,100	46	9,905
All Other**	2	153	2	160	2	150	2	161
Total/Average	198	33,555	195	34,513	196	34,177	197	36,828
Delaware								
Kent	61	5,912	61	6,171	61	6,104	62	6,746
New Castle	9	1,112	9	1,196	9	1,075	9	1,160
Sussex	11	2,056	11	2,236	12	3,251	12	3,464
Total/Average	81	9,080	81	9,602	82	10,430	83	11,369
Maine								
Androscoggin	39	4,709	39	4,782	38	4,677	38	5,037
Aroostook	8	799	8	793	8	798	8	844
Cumberland	20	1,563	19	1,643	19	1,559	20	1,615
Franklin	29	1,452	26	1,411	26	1,317	26	1,349
Kennebec	75	11,634	72	12,091	72	11,795	73	12,683
Knox	8	489	7	402	7	369	7	386
Lincoln	12	1,114	10	1,084	10	1,056	10	1,123
Oxford	16	1,237	16	1,226	15	1,081	14	1,133
Penobscot	72	10,529	70	10,461	69	10,253	67	10,966
Piscataquis	22	1,991	22	1,910	22	1,870	20	1,902
Sagadahoc	7	646	7	689	7	660	7	696
Somerset	59	8,584	58	8,798	61	8,398	59	9,009
Waldo	55	5,473	56	5,460	56	5,265	54	5,647
Washington	3	154	3	125	3	117	2	89
York	18	1,435	18	1,453	18	1,351	18	1,400
All Other**	0	0	0	0	0	0	1	36
Total/Average	443	51,808	431	52,326	431	50,566	424	53,916
Maryland								
Baltimore	26	4,605	25	4,833	25	4,866	25	5,203
Caroline	18	2,587	18	2,767	18	2,732	18	2,885
Carroll	142	16,760	143	18,430	141	17,119	142	18,343
Cecil	30	4,303	30	4,366	30	4,363	30	4,692
Charles	3	99	3	111	3	106	4	147
Frederick	128	17,462	127	18,207	130	18,435	128	20,031
Garrett	9	468	8	428	8	375	8	447
Harford	34	4,777	33	4,856	32	4,675	32	5,132
Kent	30	5,546	29	5,730	31	5,641	30	5,959
Montgomery	11	1,621	11	1,637	11	1,606	11	1,699
Queen Anne's	14	2,055	14	2,143	15	2,117	15	2,365
St. Mary's	22	631	22	683	22	660	22	676
Talbot	6	549	5	576	5	602	5	620
Washington	163	19,849	163	20,833	163	20,913	163	22,786
All Other**	10	1,494	11	1,613	9	1,426	11	1,825
Total/Average	646	82,806	642	87,212	643	85,634	644	92,812
Massachusetts								
Berkshire	25	4,737	26	4,991	26	4,930	25	5,193
Bristol	32	3,158	32	3,330	32	3,182	33	3,384
Essex	4	467	4	513	4	494	4	527
Franklin	58	6,091	58	6,071	58	5,876	57	6,301
Hampden	19	1,701	19	1,726	19	1,628	19	1,746
Hampshire	28	3,178	28	3,280	28	3,242	28	3,457
Middlesex	7	834	7	855	7	836	8	916
Plymouth	8	1,168	8	1,225	8	1,203	9	1,262

(Continued on following page)

11 **Producer Receipts by State and County*, 2001** (Continued)

State and county	September		October		November		December	
	No. of	Volume	No. of	Volume	No. of	Volume	No. of	Volume
	producers	of milk 1,000 lbs	producers	of milk 1,000 lbs	producers	of milk 1,000 lbs	producers	of milk 1,000 lbs
Massachusetts (continued)								
Worcester	51	4,943	54	4,969	51	4,701	51	5,146
All Other**	2	76	2	78	2	70	2	77
Total/Average	234	26,353	238	27,036	235	26,162	236	28,007
New Hampshire								
Belknap	5	551	5	551	5	555	6	614
Carroll	4	389	5	902	5	887	5	923
Cheshire	21	4,051	21	4,112	21	3,990	21	4,291
Coos	22	4,329	23	4,618	23	4,632	22	4,061
Grafton	48	5,152	47	5,265	47	5,224	47	5,785
Hillsborough	9	623	9	690	9	708	9	735
Merrimack	22	3,014	23	3,166	22	2,939	24	3,274
Rockingham	11	1,705	11	1,799	11	1,796	11	1,940
Strafford	6	1,460	6	1,515	6	1,523	6	1,637
Sullivan	21	3,284	20	3,305	20	3,307	20	3,526
Total/Average	169	24,558	170	25,923	169	25,562	171	26,786
New Jersey								
Burlington	10	2,572	10	2,617	8	2,657	8	2,956
Cumberland	4	481	4	494	4	479	4	502
Gloucester	8	1,386	8	1,434	8	1,342	8	1,441
Hunterdon	13	1,006	13	989	13	991	13	1,077
Salem	29	4,500	28	4,518	28	4,563	28	4,947
Somerset	3	495	3	503	3	476	3	526
Sussex	30	3,214	30	3,337	30	3,179	30	3,387
Warren	44	3,173	43	3,172	42	2,978	42	3,110
All Other**	6	615	6	581	6	548	6	576
Total/Average	147	17,442	145	17,645	142	17,213	142	18,522
New York								
Albany	17	1,788	17	1,869	17	1,852	17	2,005
Allegany	133	15,190	133	11,256	135	10,942	135	11,383
Broome	68	10,411	68	10,863	68	10,678	68	11,461
Cattaraugus	130	13,595	129	11,643	127	11,105	129	11,879
Cayuga	160	43,764	155	35,971	158	33,401	152	34,870
Chemung	30	3,463	31	3,560	31	3,546	30	3,837
Chenango	294	24,740	293	24,844	292	24,188	292	25,675
Clinton	153	26,875	152	27,389	153	25,997	153	27,677
Columbia	58	12,426	57	12,491	58	12,087	57	13,077
Cortland	167	20,981	168	21,376	166	21,195	166	23,067
Delaware	202	17,647	208	18,401	208	17,885	209	19,083
Dutchess	32	3,762	32	3,919	35	3,969	34	4,244
Erie	75	10,959	75	10,933	74	10,499	73	11,111
Essex	20	2,461	20	2,616	20	2,597	20	2,731
Franklin	199	24,307	196	24,597	193	23,435	196	24,771
Fulton	49	5,084	50	5,314	50	5,179	50	5,609
Genesee	92	27,553	91	21,079	92	28,549	93	30,015
Greene	38	2,367	36	2,367	37	2,363	37	2,521
Herkimer	213	20,362	214	20,510	219	20,000	218	21,277
Jefferson	330	46,838	336	47,011	337	45,636	338	48,515
Lewis	310	36,845	311	37,282	312	35,792	309	37,853
Livingston	81	25,151	81	20,434	80	20,338	81	21,373
Madison	247	27,962	248	28,757	247	27,973	244	29,552
Monroe	23	3,415	23	3,492	25	5,660	25	5,908
Montgomery	219	24,524	221	23,880	220	23,403	221	24,926
Niagara	6	1,342	6	1,398	6	1,384	6	1,486
Oneida	343	30,253	339	30,707	340	31,216	342	31,544
Onondaga	126	26,138	123	26,848	124	26,073	121	27,691
Ontario	115	21,766	114	20,663	114	22,584	114	23,997
Orange	93	11,006	93	11,297	92	11,089	92	11,915
Orleans	16	2,921	16	2,900	16	2,670	16	2,878

(Continued on following page)

11 Producer Receipts by State and County*, 2001 (Continued)

State and county	September		October		November		December	
	No. of	Volume	No. of	Volume	No. of	Volume	No. of	Volume
	producers	of milk 1,000 lbs	producers	of milk 1,000 lbs	producers	of milk 1,000 lbs	producers	of milk 1,000 lbs
New York (continued)								
Oswego	81	5,657	79	5,713	80	5,390	80	5,576
Otsego	292	23,356	301	24,210	303	23,421	301	24,775
Rensselaer	87	15,139	85	15,534	86	15,161	86	16,260
Saratoga	51	10,039	51	10,203	51	10,182	52	11,133
Schenectady	11	1,305	11	1,355	11	1,295	11	1,365
Schoharie	108	9,252	108	9,565	109	9,477	110	10,216
Schuyler	30	4,562	29	4,593	29	4,449	29	4,870
Seneca	87	8,499	87	8,693	86	8,531	88	9,086
St. Lawrence	413	49,779	408	50,099	408	47,786	408	50,377
Steuben	270	28,295	272	28,083	272	27,430	272	28,811
Sullivan	50	4,887	51	5,130	51	5,084	51	5,342
Tioga	99	11,918	99	12,651	100	12,740	98	13,571
Tompkins	78	11,706	78	11,957	79	13,229	79	13,251
Ulster	7	619	7	646	7	656	7	701
Washington	193	29,455	191	29,285	189	28,993	191	31,068
Wayne	79	11,805	77	12,099	78	11,766	78	12,417
Wyoming	153	57,503	153	39,940	154	43,704	158	46,967
Yates	198	13,563	197	13,791	198	13,818	197	14,673
All Other**	4	676	3	479	4	586	4	613
Total/Average	6,330	843,911	6,323	809,689	6,341	806,980	6,338	855,004
Pennsylvania								
Adams	59	6,899	59	7,367	58	7,307	58	7,706
Allegheny	14	1,102	14	1,122	14	1,099	13	1,025
Bedford	134	13,360	140	13,699	125	10,833	143	14,550
Berks	293	31,978	293	33,560	292	32,834	293	35,256
Blair	127	16,331	121	17,963	119	13,864	128	17,646
Bradford	420	36,215	425	37,105	423	36,410	426	38,474
Bucks	25	3,202	25	3,249	25	3,150	25	3,293
Cambria	9	1,076	9	1,092	8	997	9	1,152
Centre	167	14,069	165	14,438	164	13,932	137	11,902
Chester	338	29,117	339	31,742	338	31,069	337	33,195
Clearfield	9	657	9	716	9	673	9	700
Clinton	101	8,563	97	8,724	97	8,582	87	7,920
Columbia	43	3,992	43	4,040	42	3,836	41	3,827
Crawford	6	740	6	721	6	676	6	727
Cumberland	209	22,537	212	24,280	210	23,394	213	25,924
Dauphin	73	6,572	73	7,137	73	7,189	73	7,673
Fayette	22	1,727	22	1,666	22	1,654	22	1,704
Franklin	428	56,790	444	61,131	440	59,845	436	64,713
Fulton	41	3,676	42	3,858	41	3,769	48	4,444
Huntingdon	122	12,786	116	12,437	120	12,045	117	13,065
Indiana	5	295	5	296	5	294	5	320
Juniata	143	11,000	143	10,641	141	10,346	138	10,552
Lackawanna	31	1,661	31	1,760	31	1,659	31	1,736
Lancaster	1,945	152,237	1,949	162,067	1,948	158,194	1,949	169,051
Lebanon	284	34,383	285	35,658	281	34,675	281	36,777
Lehigh	14	2,133	14	2,140	14	2,123	14	2,308
Luzerne	12	858	12	858	12	841	12	900
Lycoming	135	9,650	133	9,825	134	9,452	90	7,315
McKean	20	1,314	20	1,338	20	1,318	20	1,416
Mifflin	196	17,402	197	16,660	198	16,152	183	17,164
Montgomery	25	1,985	24	2,045	24	1,976	24	2,090
Montour	32	3,218	31	3,159	33	3,289	32	3,325
Northampton	35	3,194	40	3,323	35	3,165	34	3,333
Northumberland	51	4,821	53	4,981	55	5,035	52	5,276
Perry	119	13,286	125	13,512	121	13,025	120	13,749
Potter	49	7,139	48	7,374	46	7,161	46	7,584
Schuylkill	26	1,717	25	1,808	25	1,789	25	1,918

(Continued on following page)

11 Producer Receipts by State and County*, 2001 (Continued)

State and county	September		October		November		December	
	No. of	Volume	No. of	Volume	No. of	Volume	No. of	Volume
	producers	of milk 1,000 lbs	producers	of milk 1,000 lbs	producers	of milk 1,000 lbs	producers	of milk 1,000 lbs
Pennsylvania (continued)								
Snyder	82	6,185	84	6,475	88	6,622	84	6,647
Somerset	59	5,823	65	8,047	62	6,775	67	8,352
Sullivan	27	2,411	26	2,735	27	2,752	26	2,902
Susquehanna	167	13,471	168	13,804	168	13,504	167	14,234
Tioga	211	15,848	212	16,046	211	15,324	209	15,853
Union	173	13,582	174	13,659	180	14,153	148	12,763
Washington	3	275	3	282	3	276	3	297
Wayne	120	8,234	120	8,591	122	8,201	121	8,490
Wyoming	108	7,985	107	8,055	106	7,871	106	8,367
York	136	12,779	135	13,487	134	12,679	136	13,891
All Other**	13	738	13	741	11	521	13	783
Total/Average	6,861	625,017	6,896	655,411	6,861	632,329	6,757	672,288
Rhode Island								
Newport	6	512	6	502	6	478	6	512
Washington	8	710	8	711	9	660	9	691
All Other**	6	300	6	313	6	313	6	360
Total/Average	20	1,522	20	1,526	21	1,451	21	1,562
Vermont								
Addison	233	50,085	235	51,468	233	50,436	233	53,413
Bennington	16	2,349	16	2,391	16	2,327	16	2,483
Caledonia	113	12,108	112	12,684	113	12,300	112	13,075
Chittenden	76	9,889	74	10,103	75	9,729	75	10,391
Essex	29	4,172	29	4,351	29	4,332	29	4,672
Franklin	331	59,004	332	60,298	330	58,268	329	61,693
Grand Isle	26	4,214	26	4,338	26	4,283	26	4,544
Lamoille	61	5,799	61	6,018	60	5,869	58	6,210
Orange	122	12,419	121	12,687	119	12,523	120	13,375
Orleans	202	28,219	204	28,961	203	27,756	203	30,261
Rutland	121	10,741	121	11,280	122	11,255	121	11,950
Washington	50	5,995	49	6,162	48	5,848	47	6,222
Windham	36	5,174	36	5,282	36	5,171	36	5,526
Windsor	49	4,164	50	4,477	50	4,272	52	4,558
Total/Average	1,465	214,335	1,466	220,501	1,460	214,369	1,457	228,374
Virginia								
Amelia	5	839	5	940	5	954	5	1,044
Augusta	13	1,466	14	1,432	19	2,186	19	1,890
Bedford	3	504	3	673	3	645	11	1,284
Clarke	4	1,484	4	1,271	5	1,341	4	780
Franklin	11	653	9	600	10	525	34	1,627
Greene	0	0	0	0	3	32	3	35
Harrisonburg City	23	1,642	20	1,902	14	1,235	15	1,317
Powhatan	3	560	3	627	3	660	3	746
Rockingham	54	4,839	78	5,769	76	5,522	80	7,065
Shenandoah	7	1,163	4	825	11	980	5	957
Staunton	4	620	4	607	4	642	4	743
Winchester City	3	110	3	114	3	120	3	134
All Other**	38	4,063	26	3,684	33	4,305	43	8,035
Total/Average	168	17,944	173	18,445	189	19,147	229	25,657
West Virginia								
Berkeley	9	735	9	768	11	748	11	856
Jefferson	7	954	7	1,016	8	1,098	8	1,352
All Other**	3	222	4	297	1	45	4	409
Total/Average	19	1,911	20	2,081	20	1,891	23	2,618
Other States***								
	218	27,716	182	25,943	92	13,067	232	24,283
Grand Total/Average	16,999	1,977,960	16,982	1,987,853	16,882	1,938,978	16,954	2,078,027

* Producer receipts data based on audited producer payroll reports.

** Counties with less than 3 producers are restricted and have been consolidated into the "all other" category. Some counties had more than 3 producers, but had less than 3 handlers pooling milk during the month.

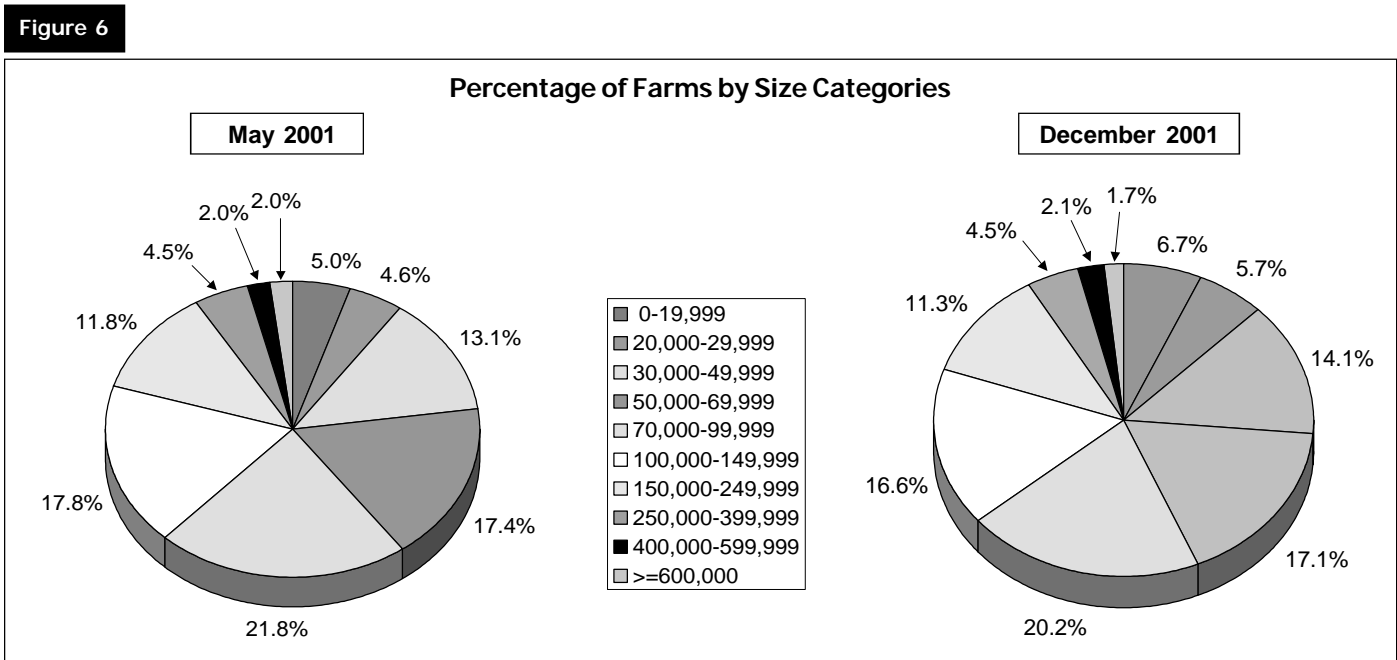
*** Represents restricted data for the states of Georgia, Idaho, Michigan, Minnesota, North Carolina, North Dakota, Nevada, South Carolina, South Dakota, Tennessee, Utah, and Wisconsin.

12 Number of Farms by Size Categories, May and December 2001

Production Range Pounds	May 2001			
	Farms		Milk	
	Number	Percentage	Total Pounds	Percentage
0-19,999	864	5.0	10,688,665	0.5
20,000-29,999	796	4.6	20,414,335	0.9
30,000-49,999	2,279	13.1	93,722,904	4.3
50,000-69,999	3,029	17.4	184,323,495	8.4
70,000-99,999	3,779	21.8	317,574,119	14.5
100,000-149,999	3,096	17.8	378,873,390	17.3
150,000-249,999	2,046	11.8	387,176,713	17.7
250,000-399,999	781	4.5	245,992,799	11.2
400,000-599,999	339	2.0	167,130,645	7.6
>=600,000	365	2.0	387,629,882	17.6
Total	17,374	100.0	2,193,526,947	100.0

Production Range Pounds	December 2001			
	Farms		Milk	
	Number	Percentage	Total Pounds	Percentage
0-19,999	1,142	6.7	14,227,006	0.7
20,000-29,999	973	5.7	24,595,557	1.2
30,000-49,999	2,413	14.1	98,151,334	4.7
50,000-69,999	2,923	17.1	176,039,762	8.5
70,000-99,999	3,471	20.2	291,215,811	14.0
100,000-149,999	2,840	16.6	348,876,725	16.8
150,000-249,999	1,931	11.3	365,696,601	17.6
250,000-399,999	768	4.5	240,414,265	11.6
400,000-599,999	353	2.1	174,171,393	8.4
>=600,000	334	1.7	344,638,367	16.5
Total	17,148	100.0	2,078,026,821	100.0

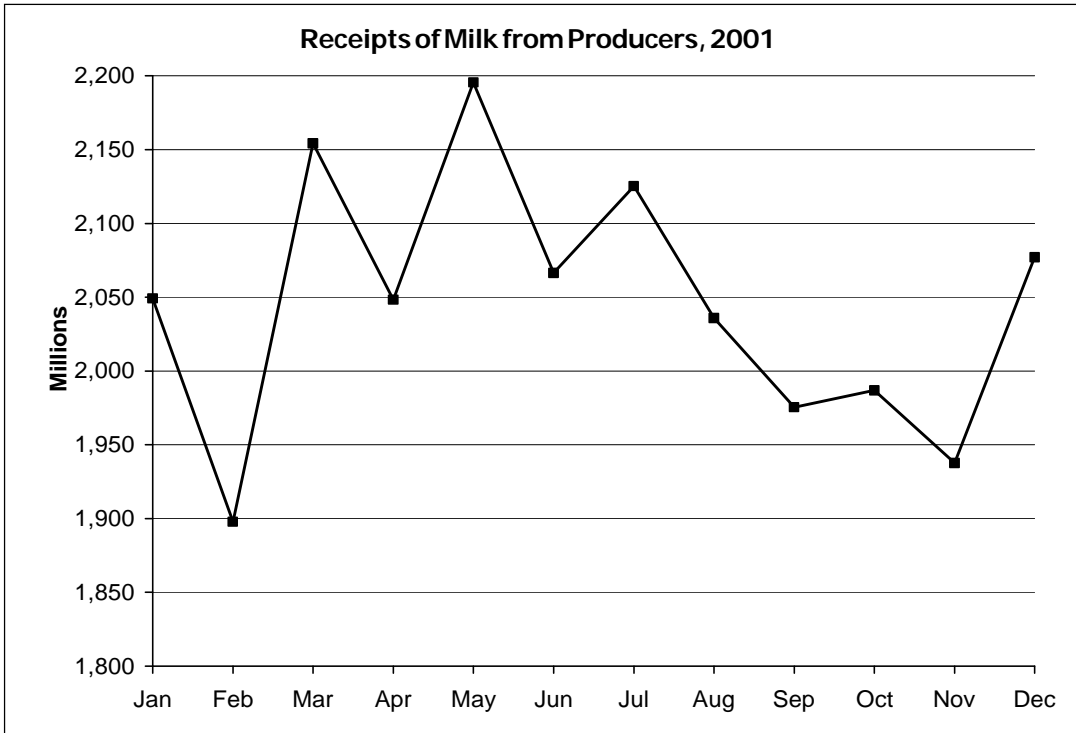
* Data compiled from payroll records; number of producers and total pounds varies from data reported at pool time shown in other tables.



13 Receipts of Fluid Milk Products and Cream by Pool Plants, 2001

	Milk from Producers	Other Sources	Fortification and Reconstitution (skim equiv.)	Overages	Opening Inventory	Total to be Accounted for
	pounds					
January	2,049,231,646	42,971,891	13,692,025	1,268,939	122,980,517	2,230,145,018
February	1,897,841,624	50,937,469	11,599,309	99,930	137,345,152	2,097,823,484
March	2,154,275,780	48,798,080	15,891,873	396,464	133,873,036	2,353,235,233
April	2,048,337,887	70,170,296	15,348,527	1,355,062	123,567,628	2,258,779,400
May	2,195,663,646	66,338,009	15,814,946	106,944	147,329,375	2,425,252,920
June	2,066,456,892	59,192,701	16,383,382	546,437	135,171,129	2,277,750,541
July	2,125,305,676	51,083,567	14,876,034	41,135	119,266,552	2,310,572,964
August	2,035,833,898	37,978,823	17,598,506	1,389,102	121,642,644	2,214,442,973
September	1,975,436,831	41,437,937	13,240,881	582,812	125,724,600	2,156,423,061
October	1,986,831,804	54,720,048	15,422,784	1,120,019	148,838,733	2,206,933,388
November	1,937,539,619	68,584,723	16,485,384	797,830	132,663,659	2,156,071,215
December	2,077,074,294	83,459,092	13,323,071	717,039	143,164,225	2,317,737,721
Total	24,549,829,597	675,672,636	179,676,722	8,421,713	1,591,567,250	27,005,167,918

Figure 7



14

Receipts from Producers by Class and Plant Location Differential, 2001

	Class I						Market Total
	Location Differential*						
	3.15 and above	3.00 - 3.10	2.80 - 2.95	2.60 - 2.70	2.40 - 2.55	2.35 and below	
	pounds						
January	309,064,951	267,452,326	119,992,676	89,001,826	72,560,969	30,215,345	888,288,093
February	277,560,749	257,232,953	113,496,537	79,948,880	67,009,279	27,012,811	822,261,209
March	322,129,937	300,716,216	131,889,129	92,270,560	72,913,577	33,285,890	953,205,309
April	285,774,126	263,848,963	116,871,994	81,344,996	63,493,542	32,070,963	843,404,584
May	302,111,809	283,914,612	124,368,920	82,534,594	77,000,575	34,027,504	903,958,014
June	286,865,683	269,135,768	111,035,305	80,750,040	61,214,196	31,894,688	840,895,680
July	273,886,256	265,752,104	116,319,780	81,936,527	64,670,915	31,578,612	834,144,194
August	287,234,402	289,473,531	127,370,023	85,884,452	70,430,945	29,131,598	889,524,951
September	284,878,498	282,821,062	120,047,284	82,277,841	82,194,438	28,800,665	881,019,788
October	305,997,035	304,192,538	131,866,581	87,568,609	90,037,658	29,688,180	949,350,601
November	297,655,341	295,888,481	129,325,242	89,211,800	86,959,969	26,592,680	925,633,513
December	299,563,000	296,937,236	125,865,309	89,060,865	71,090,733	27,884,778	910,401,921
Total	3,532,721,787	3,377,365,790	1,468,448,780	1,021,790,990	879,576,796	362,183,714	10,642,087,857
% of Total	33.2	31.7	13.8	9.6	8.3	3.4	100.0
	Class II						
	Location Differential*						
	3.15 and above	3.00 - 3.10	2.80 - 2.95	2.60 - 2.70	2.40 - 2.55	2.35 and below	Market Total
	pounds						
January	50,628,910	68,150,170	79,940,510	40,157,886	47,560,772	51,721,566	338,159,814
February	49,185,638	65,285,650	65,455,161	32,592,511	45,484,055	46,991,702	304,994,717
March	52,170,607	75,929,489	77,052,456	39,030,368	52,999,821	61,854,197	359,036,938
April	52,595,258	77,802,939	52,028,214	26,428,076	55,892,419	53,328,736	318,075,642
May	54,643,628	77,170,295	49,045,925	31,789,168	58,567,859	55,468,622	326,685,497
June	51,974,159	75,679,355	53,320,270	28,672,630	57,393,784	55,157,443	322,197,641
July	53,602,359	82,517,346	76,245,182	36,715,790	57,561,379	61,903,286	368,545,342
August	57,638,483	83,959,107	89,524,975	37,557,462	56,175,590	77,041,325	401,896,942
September	50,016,223	72,727,887	83,370,163	30,709,503	52,458,842	67,481,810	356,764,428
October	51,466,020	71,015,585	75,259,361	34,581,338	47,124,458	71,974,094	351,420,856
November	56,010,421	73,320,922	61,927,671	31,848,422	42,391,303	71,512,798	337,011,537
December	48,318,880	60,463,424	70,808,479	32,502,104	41,816,372	62,832,040	316,741,299
Total	628,250,586	884,022,169	833,978,367	402,585,258	615,426,654	737,267,619	4,101,530,653
% of Total	15.3	21.6	20.3	9.8	15.0	18.0	100.0
	Class III						
	Location Differential*						
	3.15 and above	3.00 - 3.10	2.80 - 2.95	2.60 - 2.70	2.40 - 2.55	2.35 and below	Market Total
	pounds						
January	22,228,741	61,968,450	68,545,559	61,264,014	115,721,671	295,962,166	625,690,601
February	20,000,565	54,121,003	66,277,560	54,128,017	116,782,193	282,652,083	593,961,421
March	19,659,600	56,920,951	74,369,743	59,384,473	136,749,785	327,164,667	674,249,219
April	25,358,067	59,601,997	74,361,864	60,836,452	130,408,007	335,302,659	685,869,046
May	23,892,440	57,454,069	85,353,291	59,420,766	138,406,430	370,545,078	735,072,074
June	21,867,254	51,757,589	80,160,621	60,894,832	126,372,844	361,442,604	702,495,744
July	18,496,655	60,109,898	67,871,303	63,250,070	132,236,343	362,130,294	704,094,563
August	17,577,987	46,681,154	70,838,870	61,590,511	124,869,411	322,715,477	644,273,410
September	17,445,388	42,497,583	61,530,537	62,255,223	117,811,093	294,338,310	595,878,134
October	17,119,734	46,593,807	72,192,622	59,347,055	97,280,172	258,146,349	550,679,739
November	16,764,510	45,562,949	76,217,285	54,613,068	112,742,030	247,786,395	553,686,237
December	17,271,282	67,683,633	63,613,307	60,900,034	119,567,188	280,034,031	609,069,475
Total	237,682,223	650,953,083	861,332,562	717,884,515	1,468,947,167	3,738,220,113	7,675,019,663
% of Total	3.1	8.5	11.2	9.4	19.1	48.7	100.0
	Class IV						
	Location Differential*						
	3.15 and above	3.00 - 3.10	2.80 - 2.95	2.60 - 2.70	2.40 - 2.55	2.35 and below	Market Total
	pounds						
January	6,349,707	64,468,873	104,070,628	3,394,861	3,874,048	14,935,021	197,093,138
February	(1,676,001)	57,060,593	98,345,545	791,144	2,517,915	19,585,081	176,624,277
March	4,159,028	50,997,685	96,861,784	335,767	1,968,706	13,461,344	167,784,314
April	5,370,202	58,353,105	109,617,244	3,131,457	2,929,253	21,587,354	200,988,615
May	(1,141,194)	72,738,552	124,824,836	1,821,625	7,151,530	24,552,712	229,948,061
June	(2,388,417)	56,325,930	116,603,276	484,622	4,796,094	25,046,322	200,867,827
July	16,473,249	65,911,485	106,841,605	2,944,710	3,318,224	23,032,304	218,521,577
August	2,353,904	26,067,911	55,989,456	2,186,084	3,926,235	9,615,005	100,138,595
September	14,260,291	34,659,983	65,566,667	4,017,764	4,738,877	18,530,899	141,774,481
October	1,118,201	43,130,055	68,783,075	4,045,964	9,689,868	8,613,445	135,380,608
November	(1,079,052)	27,991,480	73,743,261	829,238	4,439,241	15,284,164	121,208,332
December	2,008,696	67,770,323	121,367,725	4,025,304	18,798,434	26,891,117	240,861,599
Total	45,808,614	625,475,975	1,142,615,102	28,008,540	68,148,425	221,134,768	2,131,191,424
% of Total	2.1	29.3	53.6	1.3	3.2	10.4	100.0

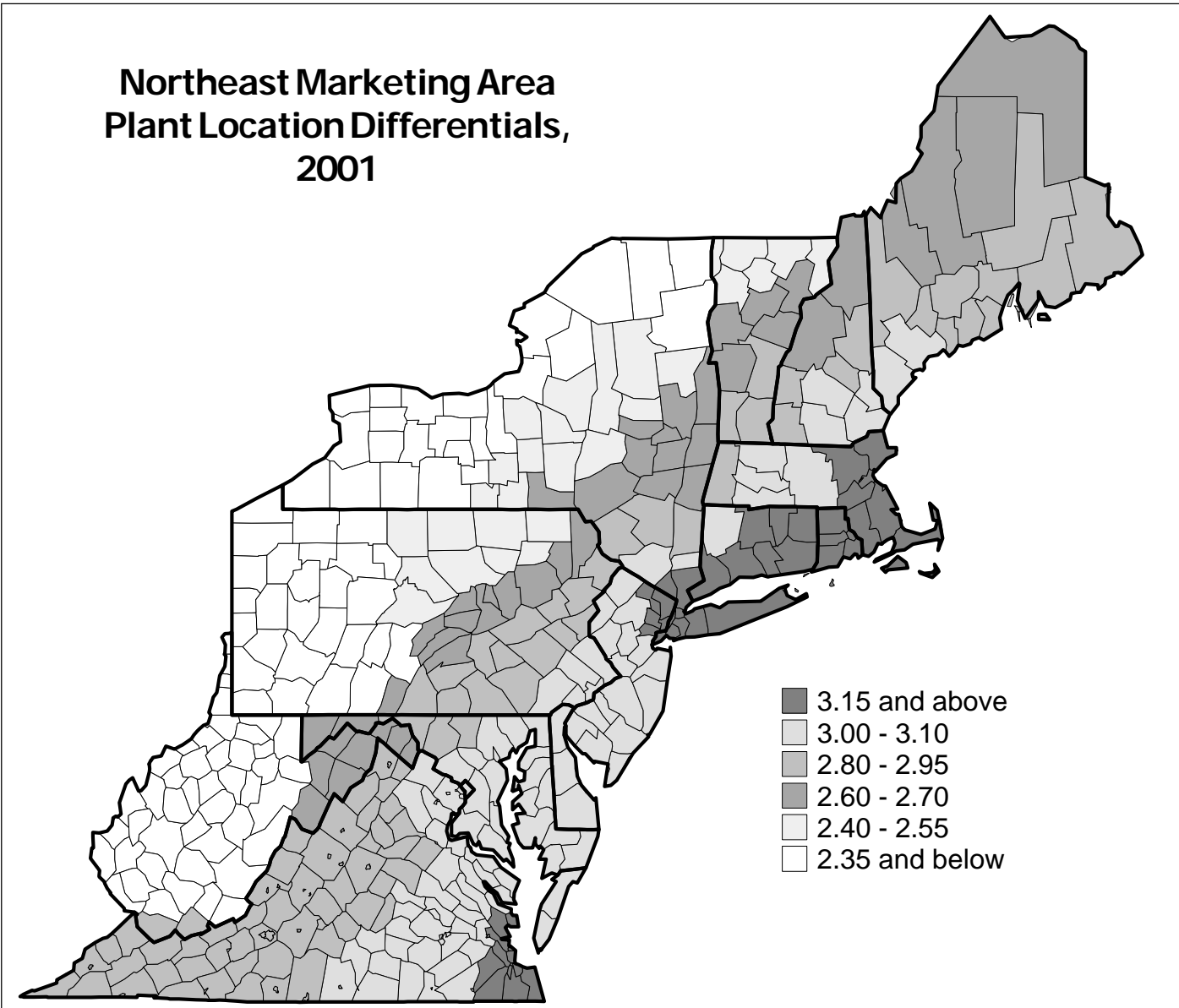
(Continued on following page)

14 Receipts from Producers by Class and Plant Location Differential, 2001 (Continued)

	Total Receipts						Market Total
	Location Differential*						
	3.15 and above	3.00 - 3.10	2.80 - 2.95	2.60 - 2.70	2.40 - 2.55	2.35 and below	
	pounds						
January	388,272,309	462,039,819	372,549,373	193,818,587	239,717,460	392,834,098	2,049,231,646
February	345,070,951	433,700,199	343,574,803	167,460,552	231,793,442	376,241,677	1,897,841,624
March	398,119,172	484,564,341	380,173,112	191,021,168	264,631,889	435,766,098	2,154,275,780
April	369,097,653	459,607,004	352,879,316	171,740,981	252,723,221	442,289,712	2,048,337,887
May	379,506,683	491,277,528	383,592,972	175,566,153	281,126,394	484,593,916	2,195,663,646
June	358,318,679	452,898,642	361,119,472	170,802,124	249,776,918	473,541,057	2,066,456,892
July	362,458,519	474,290,833	367,277,870	184,847,097	257,786,861	478,644,496	2,125,305,676
August	364,804,776	446,181,703	343,723,324	187,218,509	255,402,181	438,503,405	2,035,833,898
September	366,600,400	432,706,515	330,514,651	179,260,331	257,203,250	409,151,684	1,975,436,831
October	375,700,990	464,931,985	348,101,639	185,542,966	244,132,156	368,422,068	1,986,831,804
November	369,351,220	442,763,832	341,213,459	176,502,528	246,532,543	361,176,037	1,937,539,619
December	367,161,858	492,854,616	381,654,820	186,488,307	251,272,727	397,641,966	2,077,074,294
Total	4,444,463,210	5,537,817,017	4,306,374,811	2,170,269,303	3,032,099,042	5,058,806,214	24,549,829,597
% of Total	18.1	22.6	17.5	8.8	12.4	20.6	100.0

* Differentials have been combined in ranges to assure confidentiality of data.

Figure 8



15 Receipts from Producers by Class, 2001

	Class I	Class II	Class III	Class IV	Total Producer Receipts
	pounds				
January	888,288,093	338,159,814	625,690,601	197,093,138	2,049,231,646
February	822,261,209	304,994,717	593,961,421	176,624,277	1,897,841,624
March	953,205,309	359,036,938	674,249,219	167,784,314	2,154,275,780
April	843,404,584	318,075,642	685,869,046	200,988,615	2,048,337,887
May	903,958,014	326,685,497	735,072,074	229,948,061	2,195,663,646
June	840,895,680	322,197,641	702,495,744	200,867,827	2,066,456,892
July	834,144,194	368,545,342	704,094,563	218,521,577	2,125,305,676
August	889,524,951	401,896,942	644,273,410	100,138,595	2,035,833,898
September	881,019,788	356,764,428	595,878,134	141,774,481	1,975,436,831
October	949,350,601	351,420,856	550,679,739	135,380,608	1,986,831,804
November	925,633,513	337,011,537	553,686,237	121,208,332	1,937,539,619
December	910,401,921	316,741,299	609,069,475	240,861,599	2,077,074,294
Total/Average	10,642,087,857	4,101,530,653	7,675,019,663	2,131,191,424	24,549,829,597

16 Percent of Receipts from Producers by Class, 2001

	Class I	Class II	Class III	Class IV
	percent			
January	43.4	16.5	30.5	9.6
February	43.3	16.1	31.3	9.3
March	44.2	16.7	31.3	7.8
April	41.2	15.5	33.5	9.8
May	41.2	14.9	33.5	10.4
June	40.7	15.6	34.0	9.7
July	39.2	17.3	33.1	10.4
August	43.7	19.7	31.6	5.0
September	44.6	18.1	30.2	7.1
October	47.8	17.7	27.7	6.8
November	47.8	17.4	28.6	6.2
December	43.8	15.2	29.3	11.7
Simple Average	43.3	16.7	31.3	8.7

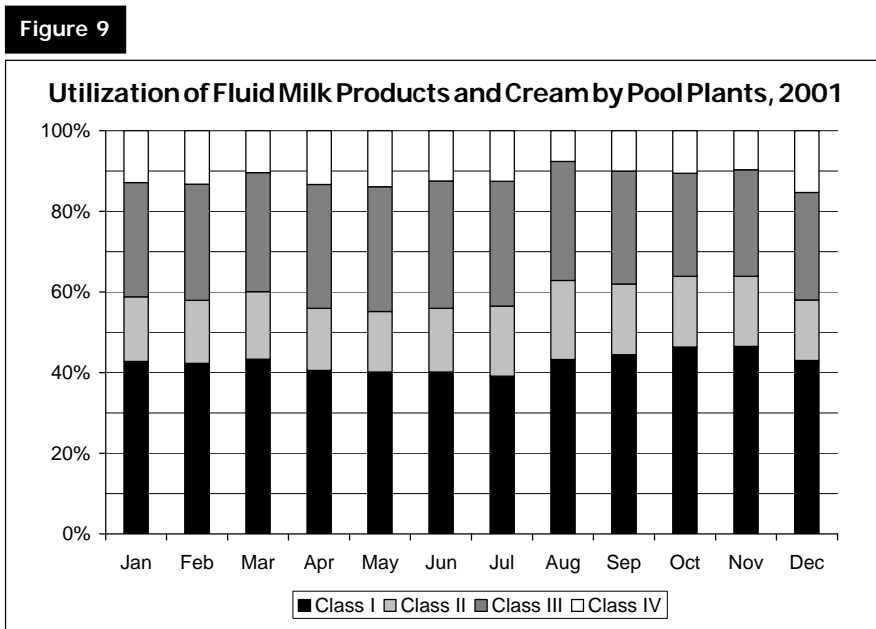
17 Utilization of Fluid Milk Products and Cream by Pool Plants*, 2001

Marketing Area Product	Class I Milk			Total Class I Product
	Outside Markets		pounds	
	Other Federal	Non-Federal		
January	862,143,207	11,026,025	80,793,557	953,962,789
February	800,124,575	7,524,502	80,240,509	887,889,586
March	915,145,762	10,122,782	94,978,441	1,020,246,985
April	823,296,255	10,220,348	82,718,546	916,235,149
May	874,072,717	10,147,041	89,551,286	973,771,044
June	823,766,821	8,854,488	82,683,368	915,304,677
July	807,388,154	10,352,101	86,146,156	903,886,411
August	840,938,452	28,899,813	88,484,893	958,323,158
September	836,493,875	26,603,250	95,160,422	958,257,547
October	897,790,030	21,788,069	104,055,809	1,023,633,908
November	896,473,328	15,814,527	91,525,791	1,003,813,646
December	886,418,831	14,824,606	96,258,275	997,501,712
Total	10,264,052,007	176,177,552	1,072,597,053	11,512,826,612

Marketing Area Product	Class II Product	Class III Product**	Class IV Product	Total Utilization Product
	pounds			
January	357,409,013	632,118,421	286,654,795	2,230,145,018
February	328,396,349	603,133,040	278,404,509	2,097,823,484
March	394,064,512	694,633,775	244,289,961	2,353,235,233
April	348,354,824	693,509,113	300,680,314	2,258,779,400
May	364,668,844	750,114,692	336,698,340	2,425,252,920
June	359,991,677	719,405,054	283,049,133	2,277,750,541
July	401,511,446	714,903,122	290,271,985	2,310,572,964
August	432,902,451	655,321,319	167,896,045	2,214,442,973
September	377,837,703	604,995,227	215,332,584	2,156,423,061
October	387,492,329	562,337,669	233,469,482	2,206,933,388
November	374,493,088	568,958,165	208,806,316	2,156,071,215
December	348,175,124	617,387,306	354,673,579	2,317,737,721
Total	4,475,297,360	7,816,816,903	3,200,227,043	27,005,167,918

* Excludes receipts from pool handlers.

** Includes Minimum Price Class utilization (animal feed and dumpage).



18 Fluid Milk Products Utilized as Class I Milk in the Marketing Area by Pool Plants, 2001

	Whole Milk		Reduced Fat Milk				Lowfat Milk			
			No Solids Added		Fortified		No Solids Added		Fortified	
	Product pounds	Butterfat percent	Product pounds	Butterfat percent	Product pounds	Butterfat percent	Product pounds	Butterfat percent	Product pounds	Butterfat percent
January	324,882,383	3.26	165,769,374	1.98	2,534,850	1.96	131,638,125	1.01	4,572,716	1.00
February	298,882,804	3.27	153,671,044	1.98	2,729,526	1.96	116,792,410	1.00	4,723,297	1.11
March	343,526,535	3.26	175,456,948	1.99	3,235,238	1.95	135,833,036	1.01	4,868,159	1.05
April	307,166,820	3.26	158,704,768	1.96	2,662,079	1.95	117,236,765	0.99	4,314,387	1.04
May	319,377,989	3.25	167,309,066	1.97	2,919,069	1.96	127,395,204	0.99	4,657,692	1.05
June	310,774,967	3.26	161,105,488	1.98	2,783,432	1.96	123,851,971	1.00	4,630,452	1.06
July	305,847,194	3.25	161,063,482	1.98	2,743,758	1.96	119,934,296	0.99	4,346,068	1.06
August	316,609,392	3.26	165,074,959	1.99	2,133,943	1.95	123,787,248	1.00	4,280,220	1.04
September	308,315,478	3.27	161,935,204	1.99	2,606,343	1.97	123,526,563	1.00	4,378,940	1.08
October	332,523,193	3.26	173,569,945	1.99	2,212,115	1.96	129,750,656	0.99	4,697,929	1.07
November	322,972,099	3.26	169,577,927	1.98	2,147,018	1.94	127,306,289	0.99	4,454,060	1.07
December	328,249,839	3.26	170,535,509	2.00	2,113,039	1.95	128,049,953	0.99	4,727,454	1.06
Total/Average	3,819,128,693	3.26	1,983,773,714	1.98	30,820,410	1.96	1,505,102,516	1.00	54,651,374	1.06
	Fat Free Milk				Flavored Milk & Drinks		Buttermilk		Eggnog	
	No Solids Added		Fortified							
	Product pounds	Butterfat percent	Product pounds	Butterfat percent	Product pounds	Butterfat percent	Product pounds	Butterfat percent	Product pounds	Butterfat percent
January	117,217,084	0.09	5,869,680	0.13	44,967,783	1.56	1,966,517	1.04	250,415	6.25
February	108,437,053	0.08	6,997,120	0.13	42,489,497	1.61	1,984,690	1.07	*	*
March	122,768,394	0.09	8,723,175	0.25	51,199,366	1.55	2,668,743	1.03	192,412	6.25
April	112,766,438	0.15	7,997,064	0.24	46,564,236	1.56	2,053,089	1.03	26,760	3.15
May	117,674,238	0.08	8,570,771	0.22	55,010,617	1.54	2,137,781	1.09	*	*
June	113,488,366	0.09	8,217,317	0.15	34,251,353	1.81	2,067,379	1.04	*	*
July	110,991,443	0.09	8,136,462	0.16	27,202,639	2.16	2,060,758	1.07	*	*
August	116,911,522	0.09	8,855,509	0.17	28,623,387	2.16	2,116,736	1.06	*	*
September	113,615,177	0.10	7,601,480	0.16	47,334,249	1.58	2,035,189	1.06	*	*
October	120,687,021	0.09	7,668,576	0.16	58,323,372	1.57	2,191,072	1.00	1,548,038	6.41
November	115,966,746	0.09	7,596,740	0.16	50,895,715	1.67	2,254,676	1.04	11,029,417	6.69
December	114,722,468	0.09	7,453,758	0.16	43,667,156	1.73	2,413,796	1.02	16,426,630	6.51
Total/Average	1,385,245,950	0.09	93,687,652	0.17	530,529,370	1.71	25,950,426	1.05	29,473,672	5.88
	Shrinkage		Ending Inventory		Total Class I Milk in the Marketing Area		Class I Out of Area		Total	
	Product pounds	Butterfat percent	Product pounds	Butterfat percent	Product pounds	Butterfat percent	Product pounds	Butterfat percent	Product pounds	Butterfat percent
January	569,972	76.09	61,904,308	1.90	862,143,207	2.06	91,819,582	1.92	953,962,789	2.04
February	1,640	N/A	63,415,494	1.89	800,124,575	2.06	87,765,011	1.85	887,889,586	2.04
March	(2,348,940)	(15.51)	69,022,696	1.86	915,145,762	2.05	105,101,223	1.85	1,020,246,985	2.03
April	830,501	50.47	62,973,348	1.93	823,296,255	2.06	92,938,894	1.86	916,235,149	2.04
May	727,551	50.47	68,292,739	1.93	874,072,717	2.03	99,698,327	1.85	973,771,044	2.01
June	(283,116)	N/A	62,879,212	1.87	823,766,821	2.06	91,537,856	1.85	915,304,677	2.04
July	2,856,103	20.41	62,205,951	1.90	807,388,154	2.10	96,498,257	1.89	903,886,411	2.07
August	1,866,589	26.17	70,678,947	1.88	840,938,452	2.08	117,384,706	1.97	958,323,158	2.07
September	213,225	N/A	64,932,027	1.89	836,493,875	2.04	121,763,672	1.97	958,257,547	2.03
October	(1,421,504)	(28.55)	66,039,617	2.03	897,790,030	2.07	125,843,878	1.97	1,023,633,908	2.06
November	3,300,371	17.14	78,972,270	2.07	896,473,328	2.14	107,340,318	2.04	1,003,813,646	2.13
December	(688,778)	(39.21)	68,748,007	1.91	886,418,831	2.14	111,082,881	2.05	997,501,712	2.13
Total/Average	5,623,614	17.50	800,064,616	1.92	10,264,052,007	2.07	1,248,774,605	1.92	11,512,826,612	2.06

* Restricted data, included in Buttermilk.
N/A = Not applicable.

19 Class II Use of Fluid Milk Products and Cream by Pool Plants*, 2001

	Packaged Cream		Nonpool Bulk**		Bakery, Candy, and Soup Products		Cottage Cheese	
	Product	Butterfat	Product	Butterfat	Product	Butterfat	Product	Butterfat
	pounds	percent	pounds	percent	pounds	percent	pounds	percent
January	57,751,037	16.61	108,044	27.47	55,274,514	3.63	37,216,744	2.63
February	55,938,208	17.02	45,520	40.00	47,323,349	3.57	34,616,371	3.02
March	65,094,108	16.99	664,840	42.10	60,575,090	3.52	57,591,960	1.87
April	63,967,999	16.81	1,488,041	18.21	30,534,177	3.72	40,384,672	0.76
May	64,481,204	16.94	4,239,766	0.91	27,643,240	3.84	47,559,592	0.85
June	57,441,063	17.45	25,930,402	6.67	32,541,260	4.33	41,505,057	0.75
July	56,647,009	17.50	41,007,669	5.41	53,412,901	3.61	49,892,867	0.68
August	58,208,166	17.66	44,290,883	4.54	72,233,262	3.17	48,972,042	1.14
September	54,890,152	17.37	35,345,612	5.00	68,833,360	3.38	45,437,191	0.76
October	61,118,032	16.97	36,174,254	5.27	62,191,028	3.57	46,693,467	0.84
November	70,251,286	17.78	35,245,266	5.41	48,538,840	3.48	42,473,795	0.84
December	67,192,547	17.52	28,317,131	4.01	44,263,438	3.47	39,943,433	0.74
Total/Average	732,980,811	17.22	252,857,428	13.75	603,364,459	3.61	532,287,191	1.24

	Ricotta Cheese		Sour Cream and Aerated Cream		Yogurt and Eggnog		Ice Cream, Desserts, and Mixes	
	Product	Butterfat	Product	Butterfat	Product	Butterfat	Product	Butterfat
	pounds	percent	pounds	percent	pounds	percent	pounds	percent
January	37,698,175	2.95	23,165,736	10.69	30,015,389	1.72	111,457,279	8.38
February	29,103,367	3.22	18,971,301	11.29	32,234,026	1.55	105,648,466	8.11
March	31,699,924	4.57	19,880,274	14.65	33,234,210	1.71	120,922,583	7.80
April	23,477,436	4.41	18,914,691	13.18	30,699,751	1.29	134,605,631	7.59
May	15,645,857	4.32	21,128,153	13.40	36,888,109	1.46	144,701,989	7.95
June	18,984,719	4.30	21,274,800	12.90	29,940,057	1.48	129,329,090	8.00
July	16,191,583	4.58	18,822,081	13.88	30,550,722	1.53	130,483,746	8.30
August	20,050,048	4.96	26,661,017	9.74	25,467,701	1.83	136,362,409	7.90
September	20,108,380	5.20	17,234,697	14.40	22,749,677	1.98	112,777,390	7.24
October	26,396,788	4.33	20,683,270	14.56	26,974,900	1.64	106,441,709	8.02
November	34,666,075	4.49	22,302,439	15.12	26,168,172	1.55	93,459,124	7.70
December	29,358,380	4.28	22,905,006	13.96	24,263,698	1.73	90,946,448	7.84
Total/Average	303,380,732	4.30	251,943,465	13.15	349,186,412	1.62	1,417,135,864	7.90

	Condensed Products		Shrinkage & Interhandler Difference		Total Class II	
	Product	Butterfat	Product	Butterfat	Product	Butterfat
	pounds	percent	pounds	percent	pounds	percent
January	3,938,227	0.08	783,868	10.42	357,409,013	7.31
February	4,815,005	0.07	(299,264)	(2.42)	328,396,349	7.44
March	4,276,393	0.48	125,130	(45.85)	394,064,512	7.33
April	4,421,603	0.07	(139,177)	(45.94)	348,354,824	7.66
May	2,993,804	1.34	(612,870)	8.83	364,668,844	7.67
June	3,274,698	1.92	(229,469)	13.22	359,991,677	7.74
July	4,598,827	0.58	(95,959)	16.58	401,511,446	7.24
August	834,091	3.73	(177,168)	61.72	432,902,451	6.90
September	602,554	2.39	(141,310)	(32.42)	377,837,703	6.93
October	785,064	1.50	33,817	N/A	387,492,329	7.27
November	374,159	1.55	1,013,932	6.49	374,493,088	7.76
December	661,414	2.70	323,629	44.91	348,175,124	7.73
Total/Average	31,575,839	1.37	585,159	3.23	4,475,297,360	7.42

* Includes sales to nonpool manufacturing plants.
 ** Includes sales to other order plants, partially regulated plants, exempt plants, and nonpool receipts at pool plants.
 N/A = Not applicable.

20 Class III Use of Fluid Milk Products and Cream by Pool Plants*, 2001

	Nonpool Bulk**		American-Type Cheeses		Italian-Type Cheeses		Swiss and Other-Type Cheeses	
	Product	Butterfat	Product	Butterfat	Product	Butterfat	Product	Butterfat
	pounds	percent	pounds	percent	pounds	percent	pounds	percent
January	11,592,778	0.17	162,831,150	3.72	302,550,141	3.45	90,912,010	6.31
February	10,584,186	0.12	155,218,997	3.79	294,574,865	3.36	84,910,857	5.97
March	16,383,290	1.57	201,218,509	3.64	344,779,138	3.09	72,747,031	8.38
April	24,236,077	2.26	219,077,673	3.63	333,607,375	3.07	60,695,787	9.47
May	32,833,098	2.16	236,093,809	3.58	364,240,196	2.94	63,718,219	9.49
June	36,157,712	2.26	267,679,860	3.62	307,901,812	2.88	61,370,524	8.43
July	49,554,729	1.89	255,854,124	3.59	318,134,795	2.90	65,083,987	8.89
August	3,844,518	3.46	234,594,535	3.37	321,171,341	2.91	64,752,307	8.41
September	5,319,188	0.98	189,655,882	3.44	315,789,690	3.06	72,368,606	7.82
October	8,910,056	0.47	200,373,261	3.29	254,271,918	3.10	73,980,881	8.14
November	4,105,386	2.61	171,970,393	3.36	267,362,230	3.09	82,546,146	8.64
December	15,197,722	0.47	209,707,737	3.51	292,038,861	3.07	77,783,907	7.63
Total/Average	218,718,740	1.54	2,504,275,930	3.55	3,716,422,362	3.08	870,870,262	8.13

	Condensed Products		Shrinkage		Total Class III	
	Product	Butterfat	Product	Butterfat	Product	Butterfat
	pounds	percent	pounds	percent	pounds	percent
January	41,560,744	0.77	15,787,972	4.27	625,234,795	3.72
February	36,314,961	0.88	16,276,711	2.70	597,880,577	3.61
March	36,044,319	1.48	17,631,539	3.59	688,803,826	3.70
April	32,651,176	1.19	16,971,182	2.77	687,239,270	3.69
May	27,540,445	1.39	18,730,708	3.68	743,156,475	3.63
June	24,968,955	1.33	14,429,261	4.51	712,508,124	3.58
July	19,599,835	3.25	115,298	10.39	708,342,768	3.64
August	23,677,203	3.15	4,230	N/A	648,044,134	3.64
September	16,142,712	0.88	(10,654)	23.33	599,265,424	3.68
October	18,474,814	0.74	8,848	49.10	556,019,778	3.72
November	21,211,745	0.52	15,545,782	3.94	562,741,682	3.91
December	16,759,057	1.51	7,483	68.01	611,494,767	3.70
Total/Average	314,945,966	1.42	115,498,360	16.03	7,740,731,620	3.69

* Includes sales to nonpool manufacturing plants.

** Includes sales to other order plants, partially regulated plants, exempt plants, and nonpool receipts at pool plants.

N/A = Not applicable.

21 Class IV Use of Fluid Milk Products and Cream by Pool Plants*, 2001

	Nonpool Bulk**		Butter		Dried Milk Products		Condensed Products	
	Product	Butterfat	Product	Butterfat	Product	Butterfat	Product	Butterfat
	pounds	percent	pounds	percent	pounds	percent	pounds	percent
January	981,042	4.92	33,664,751	43.98	172,951,576	0.99	350,677	0.08
February	634,340	3.70	31,655,678	41.03	170,707,671	0.69	187,870	0.07
March	197,051	3.61	32,542,163	35.48	149,445,389	0.62	1,992,919	1.66
April	81,753	2.71	25,383,992	44.18	183,153,107	0.43	1,042,920	1.86
May	332,493	8.42	29,129,763	46.26	231,471,675	0.42	308,903	2.13
June	523,255	11.91	17,252,407	45.30	201,891,925	0.40	0	0.00
July	3,096,585	3.64	13,155,052	45.80	184,438,793	0.38	5,006,554	5.40
August	5,009,769	7.02	6,682,157	45.08	73,665,846	0.74	5,014,731	3.45
September	3,157,357	9.51	16,231,199	40.33	92,139,641	0.92	72,614	3.65
October	2,644,704	13.42	18,978,749	47.69	120,672,738	0.59	40,341	19.13
November	1,322,697	11.21	14,137,221	48.57	119,903,892	0.62	14,442	19.25
December	2,373,709	6.57	27,505,219	48.18	220,906,294	0.35	67,932	9.09
Total/Average	20,354,755	7.22	266,318,351	44.32	1,921,348,547	0.60	14,099,903	5.48

	Shrinkage and Interhandler Difference		Ending Inventory		Skim Equivalent of NFMS to Fortify Class I		Total Class IV	
	Product	Butterfat	Product	Butterfat	Product	Butterfat	Product	Butterfat
	pounds	percent	pounds	percent	pounds	percent	pounds	percent
January	(184,798)	(22.98)	73,756,811	5.55	5,134,736	0.04	286,654,795	7.23
February	695,804	38.36	69,575,809	5.33	4,947,337	0.04	278,404,509	6.52
March	(181,797)	8.74	53,763,894	7.43	6,530,342	0.04	244,289,961	6.75
April	842,064	7.58	83,240,442	6.29	6,936,036	0.05	300,680,314	5.76
May	216,304	9.89	67,995,806	5.53	7,243,396	0.04	336,698,340	5.43
June	(90,685)	(17.06)	56,387,340	6.25	7,084,891	0.05	283,049,133	4.32
July	17,566,927	3.68	59,510,475	5.50	7,497,599	0.06	290,271,985	3.80
August	15,775,748	4.23	54,103,264	5.80	7,644,530	0.07	167,896,045	4.70
September	15,264,218	3.70	81,583,032	5.32	6,884,523	0.07	215,332,584	5.85
October	16,152,215	3.49	66,780,223	5.38	8,200,512	0.06	233,469,482	6.12
November	209,795	50.92	64,360,902	6.64	8,857,367	0.04	208,806,316	5.82
December	16,941,566	3.35	79,221,549	6.38	7,657,310	0.06	354,673,579	5.59
Total/Average	83,207,361	7.83	810,279,547	5.95	84,618,579	0.05	3,200,227,043	5.66

* Includes sales to nonpool manufacturing plants.

** Includes sales to other order plants, partially regulated plants, exempt plants, and nonpool receipts at pool plants.

22 Minimum Price Class Use and Total Utilization by Pool Plants, 2001

	Total Minimum* Price Class Utilization		Total Utilization by Pool Plants	
	Product	Butterfat	Product	Butterfat
	pounds	percent	pounds	percent
January	6,883,626	3.04	2,230,145,018	4.03
February	5,252,463	3.28	2,097,823,484	3.93
March	5,829,949	2.78	2,353,235,233	3.90
April	6,269,843	2.75	2,258,779,400	3.90
May	6,958,217	4.81	2,425,252,920	3.84
June	6,896,930	2.73	2,277,750,541	3.71
July	6,560,354	3.06	2,310,572,964	3.67
August	7,277,185	2.58	2,214,442,973	3.67
September	5,729,803	2.77	2,156,423,061	3.73
October	6,317,891	2.92	2,206,933,388	3.82
November	6,216,483	2.86	2,156,071,215	3.93
December	5,892,539	2.90	2,317,737,721	3.92
Total/Average	76,085,283	3.04	27,005,167,918	3.84

* Used in animal feed and dumpage.

23 Number of Handlers*, 2001

	Pool Handlers	Producer- Handlers	Partially Regulated Handlers**	Total
January	63	14	65	142
February	63	12	67	142
March	64	16	63	143
April	63	14	68	145
May	64	14	65	143
June	62	13	68	143
July	61	14	66	141
August	61	14	66	141
September	62	14	65	141
October	63	14	65	142
November	62	14	66	142
December	62	14	66	142
Average	63	14	66	142

* Does not include milk route operators, subdealers, vendors, or peddlers who do not operate plants.

** Includes exempt distributing plants pursuant to Section 1000.8(e) and other federal order plants with route disposition in marketing area.

24 Number of Pool Plants*, 2001

	Distributing Plants	Supply Plants	Total
January	62	11	73
February	62	11	73
March	64	11	75
April	63	11	74
May	64	12	76
June	62	12	74
July	61	12	73
August	61	11	72
September	62	11	73
October	63	12	75
November	62	12	74
December	62	12	74
Average	62	12	74

* Includes cooperative associations' plants in the marketing area.

Listing of Pool Handlers and Plants Operating Under the Northeast Order, December 2001

OPERATING HANDLER	PLANT		
Name	Location	Type*	Differential
Agri-Mark, Inc.	Cabot, VT	PS	\$2.60
Agri-Mark, Inc.	Methuen, MA	9C	
Agri-Mark, Inc.	Middlebury, VT	PS	\$2.60
Agri-Mark, Inc.	West Springfield, MA	PS	\$3.00
Allied Federated Cooperatives, Inc.	Canton, NY	9C	
Armstrong, David F., D/B/A Sunset Dairy	Whitesboro, NY	ED	\$2.50
Bayside State Prison	Leesburg, NJ	ED	\$3.05
Boice, Richard P., D/B/A Boice Bros. Dairy	Kingston, NY	PD	\$2.80
Briggs, Robert A., D/B/A Shady Oak Farms	W. Medway, MA	ED	\$3.25
Byrne Dairy, Inc.	Syracuse, NY	PD	\$2.50
Cacique, Inc.	City of Industry, CA	PR	\$2.10
Christiansen Dairy Co., Inc.	N. Providence, RI	ED	\$3.25
Chrome Dairy Farms	Oxford, PA	ED	\$3.05
Clover Farms Dairy Company	Reading, PA	PD	\$2.80
Cloverland/Green Spring Dairy	Baltimore, MD	PD	\$3.00
Cooperative Milk Producers Association	Blackstone, VA	9C	
Cooper's Hilltop Farm	Rochdale, MA	ED	\$3.10
Cornell University Dept. of Food Science	Ithaca, NY	ED	\$2.50
Crescent Ridge Dairy, Inc.	Sharon, MA	PH	\$3.25
Crowley Foods, LLC	Albany, NY	PD	\$2.70
Crowley Foods, LLC	Arkport, NY	PD	\$2.30
Crowley Foods, LLC	Binghamton, NY	PD	\$2.70
Crowley Foods, LLC	Concord, NH	PD	\$3.00
Cumberland Dairy, Inc.	Bridgeton, NJ	PD	\$3.05
Cumberland Valley Milk Producers	Allentown, PA	9C	
Dairy Farmers of America, Inc.	Henderson, CO	9C	
Dairy Farmers of America, Inc.	Knoxville, TN	9C	
Dairy Maid Dairy, Inc.	Frederick, MD	PD	\$2.90
Dairy Marketing Services, LLC	Reading, PA	PS	\$2.80
Dairy Marketing Services, LLC	Syracuse, NY	9C	
Dan-Ed Corp. T/A Guers Dairy	Pottsville, PA	PR	\$2.80
Dannon Co., The	Fort Worth, TX	PR	\$3.00
Dannon Co., The	West Jordan, UT	PD	\$1.90
Dean Dairy Products Co.	Sharpsville, PA	OF	\$2.10
Donald J. Bangma Dairy	Uxbridge, MA	PH	\$3.10
Dunajski Dairy, Inc.	Peabody, MA	PH	\$3.25
Dutch Valley Food Co., Inc.	Sunbury, PA	PD	\$2.70
Dutch Way Farm Market	Myerstown, PA	PH	\$2.80
Elmhurst Dairy, Inc.	Jamaica, NY	PD	\$3.15
Emkay Trading Corporation	Arcade, NY	PS	\$2.20
Emmons Willowbrook Farm, Inc.	Pemberton, NJ	ED	\$3.05
Fike's Dairy, Inc.	Uniontown, PA	OF	\$2.30
Fish Family Farm, Inc.	Bolton, CT	ED	\$3.15

(Continued on following page)

Listing of Pool Handlers and Plants Operating Under the Northeast Order, December 2001 *(Continued)*

OPERATING HANDLER	PLANT		
Name	Location	Type*	Differential
Fleur De Lait	New Holland, PA	PS	\$2.90
Freddy-Hill Farms	Lansdale, PA	ED	\$3.05
Friendship Dairies, Inc.	Friendship, NY	PR	\$2.30
Galliker Dairy Company	Johnstown, PA	PR	\$2.30
Garelick Farms, Inc. of Maine	Bangor, ME	PD	\$2.80
Garelick Farms, Inc. of Vermont	Bennington, VT	PD	\$2.80
Garelick Farms, Inc. of New York	E. Greenbush, NY	PD	\$2.70
Garelick Farms, Inc. of New Jersey	Florence, NJ	PD	\$3.05
Garelick Farms, Inc.	Franklin, MA	PD	\$3.25
Garelick Farms, Inc.—Lynn	Lynn, MA	PD	\$3.25
Giant Foods, Inc., T/A Giant Food Dairy	Landover, MD	PD	\$3.00
Gossner Foods, Inc.	Logan, UT	OF	\$1.90
Guida-Seibert Dairy Company, The	New Britain, CT	PD	\$3.15
H E Heindel & Sons D/B/A Brown Cow Country Market	Broque, PA	ED	\$2.90
H.P. Hood, Inc.	Agawam, MA	PD	\$3.00
H.P. Hood, Inc.	Barre, VT	PD	\$2.60
H.P. Hood, Inc.	Oneida, NY	PD	\$2.50
H.P. Hood, Inc.	Portland, ME	PD	\$3.00
H.P. Hood, Inc.	Vernon, NY	PD	\$2.50
H.P. Hood, Inc.	Winchester, VA	PD	\$2.80
Halo Farm, Inc.	Trenton, NJ	PD	\$3.10
Harrisburg Dairies, Inc.	Harrisburg, PA	PD	\$2.80
Hatchland Dairy	N. Haverhill, NH	PH	\$2.60
Hermany Farms, Inc.	Bronx, NY	PD	\$3.15
High Lawn Farm	Lee, MA	ED	\$2.80
Hillside Farms	Shavertown, PA	ED	\$2.70
Holland Patent Farmer's Coop	Holland Patent, NY	9C	
Hy Point Dairy Farms, Inc.	Wilmington, DE	PD	\$3.05
Jean Moniz, D/B/A Arruda's Dairy Farm	Tiverton, RI	ED	\$3.25
Kemps Foods, LLC	Lancaster, PA	PD	\$2.90
Kohler Mix Specialties, Inc.	Newington, CT	PR	\$3.15
Kohler Mix Specialties, Inc.	White Bear Lake, MN	OF	\$1.70
Kolb's Farm Store	Spring City, PA	ED	\$3.05
Kreider Dairy Farms, Inc.	Manheim, PA	PH	\$2.90
Land O'Lakes, Inc.	Carlisle, PA	9C	
Land O'Lakes, Inc.	Greenwood, WI	PS	\$1.70
Land O'Lakes, Inc.	Mt. Holly Springs, PA	PS	\$2.80
Land O'Lakes, Inc.	Perham, MN	PS	\$1.65
Land-O-Sun Dairies, Inc., D/B/A Pet Dairy	Portsmouth, VA	PR	\$3.20
Lapp Valley Farm	New Holland, PA	ED	\$2.90
Leonard, D/B/A Stewart Leonard's Dairy, Inc.	Norwalk, CT	PD	\$3.15
Lewes Dairy, Inc.	Lewes, DE	PD	\$3.05
Lewis County Dairy Corp.	Lowville, NY	PD	\$2.30

(Continued on following page)

Listing of Pool Handlers and Plants Operating Under the Northeast Order, December 2001 *(Continued)*

OPERATING HANDLER	PLANT		
Name	Location	Type*	Differential
Lifeway Foods, Inc.	Morton Grove, IL	OF	\$1.80
Longacre's Modern Dairy, Inc.	Barto, PA	PD	\$2.80
Manino, Rose (Dairy-Dell)	Frankfort, NY	ED	\$2.50
Maplehofe Dairy	Quarryville, PA	ED	\$2.90
Marcus Dairy	Danbury, CT	PD	\$3.15
Maryland & Virginia M.P.C.A., Inc.	Laurel, MD	PS	\$3.00
Maryland & Virginia M.P.C.A., Inc.	Reston, VA	9C	
McNamara, Patrick, D/B/A McNamara's Dairy	Plainfield, NH	PH	\$2.80
MD & VA M.P.C.A., T/A Marva Maid Dairy	Newport News, VA	PR	\$3.20
Merrymead Farm Market	Lansdale, PA	ED	\$3.05
Michael Janas/Hillcrest Dairy	Moravia, NY	ED	\$2.30
Middlebury Coop. Milk Producers Assoc.	Little Marsh, PA	9C	
Milkco, Inc.	Asheville, NC	OF	\$2.95
Monument Farms, Inc.	Weybridge, VT	PH	\$2.60
Morningstar Foods, Inc.	Fraser, NY	PD	\$2.70
Morningstar Foods, Inc.	Gustine, CA	PR	\$1.70
Morningstar Foods, Inc.	Mt. Crawford, VA	PD	\$2.80
Mountain Dairy—Stearns, Willard J.	Mansfield Center, CT	PH	\$3.15
Munroe, A.B. Dairy, Inc.	E. Providence, RI	PD	\$3.25
Nichols, David, D/B/A Hilltown Dairy	Chesterfield, MA	ED	\$3.00
Oak Tree Farm Dairy, Inc.	E. Northport, NY	PD	\$3.15
Oakhurst Dairy	Portland, ME	PD	\$3.00
Oneida Madison	Syracuse, NY	9C	
Oneida-Lewis Milk Producers Coop., Inc.	West Leyden, NY	9C	
Oregon Dairy	Lititz, PA	PH	\$2.90
Parmalat/Farmland Dairies, Inc.	Wallington, NJ	PD	\$3.15
Parmalat/Sunnydale Farms, Inc.	Brooklyn, NY	PD	\$3.15
Parmalat-White Knight Packaging	Wyoming, MI	OF	\$1.80
Peaceful Meadows Ice Cream, Inc.	Whitman, MA	ED	\$3.25
Pearson, Robert, D/B/A Elmhurst Dairy	W. Millbury, MA	ED	\$3.10
Pedro, Joseph, D/B/A Pedro's Dairy Farm	Fall River, MA	ED	\$3.25
Pennview Farms	Perkasie, PA	ED	\$3.05
Perrydell Farm	York, PA	ED	\$2.90
Pine View Acres, Inc.	Lancaster, PA	ED	\$2.90
Pioneer Dairy, Inc.	Southwick, MA	PD	\$3.00
Potomac Farms Dairy	Cumberland, MD	PR	\$2.60
Puleo's Dairy, Inc.	Salem, MA	ED	\$3.25
Pure Country Dairy	Williamsport, PA	ED	\$2.50
Quality Milk, Inc.	Ware, MA	ED	\$3.00
Queensboro Farm Products, Inc.	Canastota, NY	PS	\$2.50
Readington Farms, Inc.	Whitehouse, NJ	PD	\$3.10
Ready Food Products, Inc.	Philadelphia, PA	PD	\$3.05
Richardson Farms, Inc.	Middleton, MA	PH	\$3.25
Richardson, G.H. Dairy	Dracut, MA	ED	\$3.25

(Continued on following page)

Listing of Pool Handlers and Plants Operating Under the Northeast Order, December 2001 *(Continued)*

OPERATING HANDLER	PLANT		
Name	Location	Type*	Differential
Richfood Dairy	Richmond, VA	PD	\$3.10
Ridge View Farms	Elizabethtown, PA	ED	\$2.90
Ritchey's Dairy, Inc.	Martinsburg, PA	PR	\$2.30
Ronnybrook Farm Dairy, Inc.	Ancramdale, NY	ED	\$2.70
Rosenberger's Dairies, Inc.	Hatfield, PA	PD	\$3.05
Rutter Bros. Dairy, Inc.	York, PA	PD	\$2.90
Ryan Food Company	Murray, KY	OF	\$2.40
Savannah Manufacturing Company	Savannah, GA	PR	\$3.45
Schneider/Valley Farms Dairy	Williamsport, PA	PR	\$2.50
Shaw Farm Dairy, Inc.	Dracut, MA	ED	\$3.25
Shenandoah's Pride Dairy	Springfield, VA	PD	\$3.00
Smith Dairy Products/Wayne Div.	Richmond, IN	OF	\$2.00
Smyth, Michael, D/B/A Trinity Farm	Enfield, CT	ED	\$3.15
St. Albans Cooperative Creamery, Inc.	St. Albans, VT	PS	\$2.40
St. Albans Cooperative Creamery, Inc.	St. Albans, VT	9C	
Steuben Foods	Elma, NY	PD	\$2.20
Stewart's Processing Corp.	Greenfield, NY	PD	\$2.70
Stillman Dairy	Lunenburg, MA	ED	\$3.10
Suloman's Milk	Gilbertsville, PA	ED	\$3.05
Synakowski, Walter, D/B/A Valley Side Farm	Remsen, NY	ED	\$2.50
Tanner Brothers Dairy	Ivyland, PA	PH	\$3.05
Thomas, Orin & Sons, Inc., D/B/A Thomas Dairy	Rutland, VT	PD	\$2.60
Turkey Hill Dairy, Inc.	Conestoga, PA	PD	\$2.90
Tuscan/Lehigh Valley Dairies, LP	Lansdale, PA	PD	\$3.05
Tuscan/Lehigh Valley Dairies, LP	Schuylkill Haven, PA	PR	\$2.80
Tuscan/Lehigh Valley Dairies, LP	Union, NJ	PD	\$3.15
Upstate Milk Cooperative, Inc.	Buffalo, NY	PR	\$2.20
Upstate Milk Cooperative, Inc.	LeRoy, NY	9C	
Upstate Milk Cooperative, Inc.	Rochester, NY	PD	\$2.30
Valley Rich Dairy	Roanoke, VA	OF	\$2.80
Van Wie, C.F., D/B/A Meadowbrook Farms	Clarksville, NY	ED	\$2.70
Walsh, William	Simsbury, CT	ED	\$3.15
Wawa Dairy Farms	Wawa, PA	PD	\$3.05
Way-Har Farms	Bernville, PA	ED	\$2.80
Wengert's Dairy, Inc.	Lebanon, PA	PD	\$2.80
Whittier Farms, Inc.	Shrewsbury, MA	PH	\$3.10
Winsor, S.B. Dairy, Inc.	Johnston, RI	ED	\$3.25
Worcester Creameries, Corp.	Roxbury, NY	PD	\$2.70
Wright's Dairy Farm, Inc.	N. Smithfield, RI	PH	\$3.25
Z & R Corp. D/B/A Mohawk Dairy	Amsterdam, NY	PD	\$2.70

* PD = Pool distributing plant, PS = Pool supply plant, PR = Partially regulated distributing plant, 9C = Cooperative as handler, PH = Producer-Handler, ED = Exempt distributing plant, OF = Other federal order plant.

Cooperatives Marketing in the Northeast as of December 31, 2001

Addison Cooperative Milk Producers Association Inc.
 Agri-Mark, Inc.
 Best Milk Producers Cooperative, Inc.*
 Boonville Farms Cooperative, Inc.
 Burke Milk Producers Co-operative Inc.
 Butternut Farms Organic Coop Inc.*
 Canajoharie Co-operative Milk Producers, Inc.
 Canton Producers Cooperative, Inc.
 Cape Vincent Milk Producers Cooperative, Inc.
 Cedarville Milk Producers Cooperative, Inc.
 Champlain Milk Producers Cooperative, Inc.
 Chateaugay Cooperative Marketing Association, Inc.
 Conesus Milk Producers Co-operative Inc.
 Cooperative Milk Producers Association
 Cortland Bulk Milk Producers Co-operative Inc.
 Coventry Producers' Cooperative, Inc.
 Cumberland Valley Milk Producers
 Dairy Farmers of America, Inc.
 Dairylea Cooperative Inc.
 Deer River Bulk Co-op, Inc.
 Down State Milk Producers Cooperative Inc.
 Empire-Keystone Milk Producers Cooperative, Inc.
 Farmers Friendly Coop. Inc.*
 Fingerlakes Milk Cooperative Inc.*
 Georgetown-Sheds Milk Producers Cooperative, Inc.
 Glen Milk Producers Cooperative, Inc.
 Gouverneur Cooperative Dairymen, Inc.
 H. P. Farmers Cooperative, Inc.
 Independent Dairymen's Cooperative Association, Inc.
 Interstate Bulk Milk Producers Co-operative, Inc.
 Jefferson Bulk Milk Co-op Inc.
 Kirkland Milk Producers Cooperative, Inc.
 Konhokton Milk Producers Cooperative Association, Inc.
 Lanco Dairy Farms Co-Op
 Land O'Lakes, Inc.
 Liberty Valley Cooperative Milk Producers Association
 Lisbon Producers Cooperative, Inc.
 Lowville Producers Dairy Cooperative, Inc.
 Malone Milk Producers Coeprative, Inc.
 Marble City Bulk Milk Co-op. Inc.
 Maryland and Virginia Milk Producers Cooperative, Inc.

Massachusetts Cooperative Milk Producers Federation, Inc.
 Middlebury Cooperative Milk Producers Association
 Mohawk High Protein Co-operative
 Mohawk Valley Cooperative, Inc.
 Mount Joy Farmers Cooperative Association, Inc.
 National Farmers Organization
 Niagara Milk Cooperative, Inc.
 North Lawrence Milk Producers Cooperative Association, Inc.
 North Penn Bulk Milk Producers Cooperative, Inc.
 Northern New York Bulk Milk Producers Cooperative, Inc.
 Northern Tier Farmers Union Milk Producers*
 Oneida-Lewis Milk Producers Coeprative, Inc.
 Oneida-Madison Milk Producers Cooperative Association, Inc.
 Owasco Valley Milk Producers Cooperative, Inc.
 Port Allegany Cooperative Milk Producers Association
 Preble Milk Cooperative Association, Inc.
 Producers' Co-operative, Inc.
 Progressive Dairymen's Cooperative, Inc.
 Quality Milk Producers Coop., Inc.*
 Rock Royal Cooperative, Inc.
 Rockdale Producers Cooperative Association, Inc.
 Scenic Mountain Milk Producers Cooperative Inc.
 Schenevus-Elk Creek Producers Co-op., Inc.
 Schoharie County Cooperatie Dairies, Inc.
 Seaway Bulk Milk Producers Coop. Inc.
 South New Berlin Milk Cooperative, Inc.
 Southern Tier Independent Milk Producers Co-op, Inc.
 St. Albans Cooperative Creamery, Inc.
 St. Lawrence Valley Bulk Milk Producers Co-operative, Inc.
 Steamburg Milk Producers Cooperative, Inc.
 Sullivan County Co-operative Dairy Association, Inc.
 Syracuse Dairy Farmers Cooperative, Inc.
 Tioga Valley Cooperative Bulk Milk Producers Association
 Tughill Milk Producers Co-operative, Inc.
 United North Country Bargaining Co-op, Inc.
 Upstate Milk Cooperatives, Inc.
 Westco Milk Producers Cooperative

* Cooperative does not have a USDA Capper-Volstead voting determination.

Changes to Handler List by Month, 2001

January

- H.P. Hood, Inc., Vernon, NY, status changed from a pool distributing to a nonpool manufacturing plant.
- High Lawn Farm, Lee, MA, status changed from a producer-handler to an exempt distributing plant.
- Joseph Pedro, Fall River, MA, status changed from a producer-handler to an exempt distributing plant.
- Michigan Milk Producers Association, discontinued 9C group operation.
- McDonald Dairy Co., Flint, MI, an other federal order pool plant, resumed route disposition in the Northeast Marketing Area.
- Ryan Foods Company, Jacksonville, FL, an other federal order pool plant, discontinued route disposition in the Northeast Marketing Area.
- Shaw Farm Dairy, Inc., Dracut, MA, status changed from a producer-handler to an exempt distributing plant.
- Susquehanna Mini Dairy Coop., Quarryville, PA, status changed from an exempt distributing to a nonpool manufacturing plant.
- Wayne Dairy Products, Richmond, IN, changed name to Smith Dairy Products/Wayne Division.

February

- Christiansen Dairy Co., Inc., North Providence, RI, status changed from a pool distributing to an exempt distributing plant.
- Dean Dairy Products, Sharpsville, PA, an other federal order pool plant, began route disposition in the Northeast Marketing Area.
- Donald J. Bangma Dairy, Uxbridge, MA, status changed from a producer-handler to an exempt distributing plant.
- Lifeway Foods, Inc., Skokie, IL, status changed from an exempt distributing to an other federal order plant with route disposition in the Northeast Marketing Area.
- McDonald Dairy Co., Flint, MI, an other federal order pool plant, discontinued route sales in the Northeast Marketing Area.
- McNamara's Dairy, Plainfield, NH, status changed from a producer-handler to an exempt distributing plant.
- Oakhurst Dairy Inc., Portland, ME, status changed from a partially regulated to a pool distributing plant.

March

- Donald J. Bangma Dairy, Uxbridge, MA, status changed from an exempt distributing plant to a producer-handler.
- Christiansen Dairy Co., Inc., North Providence, RI, status changed from an exempt distributing to a pool distributing plant.
- H. P. Hood, Inc., Vernon, NY, status changed from a nonpool manufacturing to a pool distributing plant.
- Lifeway Foods, Inc., Skokie, IL, status changed from an other federal order pool plant with route disposition in the Northeast Marketing Area to an exempt distributing plant.
- McNamara's Dairy, Plainfield, NH, status changed from an exempt distributing plant to a producer-handler.
- Maplehofe Dairy, Quarryville, PA, status changed from an exempt distributing plant to a producer-handler.
- Stillman Dairy, Lunenburg, MA, became an exempt distributing plant.
- Shaw Farm Dairy, Inc., Dracut, MA, status changed from an exempt distributing plant to a producer-handler.
- Charles Edwards, d/b/a Model Dairy Farm, name changed to Kurt Edwards, d/b/a Model Dairy Farm.

April

- Christiansen Dairy Co., Inc., North Providence, RI, status changed from a pool distributing to an exempt distributing plant.
- Kohler Mix Specialties, Inc., Newington, CT, status changed from a nonpool manufacturing to a partially regulated distributing plant.
- Flav-O-Rich, Inc., Wilkesboro, NC, an other federal order plant, began route disposition in the Northeast Marketing Area.
- Maplehofe Dairy, Quarryville, PA, status changed from a producer-handler to an exempt distributing plant.
- Shaw Farm Dairy, Inc., Dracut, MA, status changed from a producer-handler to an exempt distributing plant.

(Continued on following page)

Changes to Handler List by Month, 2001 *(Continued)*

May

- Christiansen Dairy Co., Inc., North Providence, RI, status changed from an exempt distributing to a pool distributing plant.
- Dairy Farmers of America, Inc., Fergus Falls, MN, became a pool supply plant.
- Lifeway Foods, Inc., Skokie, IL, an exempt distributing plant, discontinued route disposition in the Northeast Marketing Area.
- Schneider Valley Farm Dairy Co., Williamsport, PA, status changed from a partially regulated to a pool distributing plant.
- Turner's Dairy, Inc., Salem Depot, NH, a pool distributing plant, ceased plant operations.

June

- Christiansen Dairy Co., Inc., North Providence, RI, status changed from a pool distributing to an exempt distributing plant.
- Donald J. Bangma Dairy, Uxbridge, MA, status changed from a producer-handler to an exempt distributing plant.
- Flav-O-Rich, Inc., Wilkesboro, NC, an other federal order pool plant, discontinued route disposition in the Northeast Marketing Area.
- Maplehofe Dairy, Quarryville, PA, status changed from an exempt distributing plant to a producer-handler.
- McNamara's Dairy, Plainfield, NH, status changed from a producer-handler to an exempt distributing plant.
- Schneider Valley Farm Dairy Co., Williamsport, PA, status changed from a pool distributing to a partially regulated plant.

July

- Donald J. Bangma Dairy, Uxbridge, MA, status changed from an exempt distributing plant to a producer-handler.
- Hillside Farms, Shavertown, PA, became an exempt distributing plant.
- Maplehofe Dairy, Quarryville, PA, status changed from a producer-handler to an exempt distributing plant.
- McNamara's Dairy, Plainfield, NH, status changed from an exempt distributing plant to a producer-handler.
- Meadowbrook Farms Dairy Co., Pottstown, PA, a pool distributing plant, ceased plant operations.
- Michael Janas/Hillcrest Dairy, Moravia, NY, became an exempt distributing plant.
- Ryan Food Company, Murray, KY, an other federal order pool plant, discontinued route disposition in the Northeast Marketing Area.

August

- Donald J. Bangma Dairy, Uxbridge, MA, status changed from a producer-handler to an exempt distributing plant.
- Dairy Farmers of America, Inc., Fergus Falls, MN, a pool supply plant, discontinued operations under the Northeast Order.
- Maplehofe Dairy, Quarryville, PA, status changed from an exempt distributing plant to a producer-handler.
- Salem Valley Farms, Salem, CT, an exempt distributing plant, ceased plant operations.

September

- Crowley Foods, Inc., with plants in Albany, Arkport, Binghamton, and LaFargeville, NY, and Concord, NH, changed name to Crowley Foods, LLC.
- Donald J. Bangma Dairy, Uxbridge, MA, status changed from an exempt distributing plant to a producer-handler.
- Kemps Foods Inc., with plants in Lancaster and York, PA, changed name to Kemps Foods, LLC.
- Kurt Edwards d/b/a Model Dairy Farm, Gloversville, NY, an exempt distributing plant, ceased plant operations.
- Ryan Foods Company, Murray, KY, an other federal order pool plant, resumed route disposition in the Northeast Marketing Area.

(Continued on following page)

Changes to Handler List by Month, 2001 *(Continued)*

- Schneider Valley Farm Dairy Co., Williamsport, PA, status changed from a partially regulated to a pool distributing plant.

October

- Christiansen Dairy Co. Inc., North Providence, RI, status changed from an exempt distributing to a pool distributing plant.
- Dairy Marketing Services, LLC, Reading, PA, began operating as a pool supply plant.
- Kohler Mix Specialties, Sulphur Springs, TX, an other federal order pool plant, began route disposition in the Northeast Marketing Area.
- Maplehofe Dairy, Quarryville, PA, status changed from a producer-handler to an exempt distributing plant.
- Shenandoah's Pride (Valley of Virginia), Mt Crawford, VA, changed name to Morningstar Foods Inc.

November

- Christiansen Dairy Co., Inc., North Providence, RI, status changed from a pool distributing to an exempt distributing plant.
- Kohler Mix Specialties, Sulphur Springs, TX, an other federal order pool plant, discontinued route disposition in the Northeast Marketing Area.
- Pure Country Dairy, Williamsport, PA, became an exempt distributing plant.

December

- Ready Food Products, Inc., Philadelphia, PA, status changed from a partially regulated to a pool distributing plant.
- Schneider Valley Farm Dairy Co., Williamsport, PA, status changed from a pool distributing to a partially regulated plant.

Bulletin Highlights—2001

January

A U.S. District Court Judge halted portions of final amendments to federal milk orders. The ruling results from a Motion for a Temporary Restraining Order and/or Preliminary Injunction filed by several producer groups stating that the implementation of a separate Class III butterfat price would cause harm to milk producers.

Farmland values trended upward for the nation as a whole. A table showed the farm real estate average value and percent change for selected states and the United States from January 1996 to 2000.

Effective January 16, 2001, the Commodity Credit Corporation (CCC) purchase prices under the support price program were adjusted; a table showed the previous and current purchase and market prices for nonfat dry milk, cheese, and butter.

The USDA's Farm Service Agency began distributing Dairy Market Loss Assistance III payments during December 2000. A breakdown by state of the number of farmers receiving payment, total payments, and average payment per farmer were shown in a table.

The pool for all federal orders for the year 2000 was summarized in a table.

February

The composite statistical uniform price (SUP) paid to producers shipping milk to handlers regulated under the Northeast Order for the year 2000 was given, with a breakdown of components that make up the pool value shown in a table.

The Northeast Order's milkshed expanded, and a table showed the distant states providing milk to the Northeast Order in the year 2000.

Total milk production in the United States rose 3 percent in 2000. A table showed the top ten states ranked by milk production, and a chart illustrated the growth of annual milk production in the United States from 1981 to 2000.

March

Grade AA butter and 40-pound block cheese prices climbed on the Chicago Mercantile Exchange (CME); figures compared the prices on the CME with those reported by the National Agricultural Statistics Service (NASS) survey.

The Northeast Order Market Administrator's bulk tank verification program for all non-member cooperative associations resumed operation, and a tentative schedule was published.

Year-to-year changes in receipts of producer milk by state for January 2000 and 2001 were discussed and shown on a map.

April

The USDA sought nominations for the National Dairy Promotion and Research Board, established to develop and administer a coordinated program of promotion, research, and nutrition education.

The Consumer Price Index (CPI) was explained. A table showed the nominal vs. adjusted average prices, and a chart showed the results of using the CPI to adjust Class I prices.

USDA's National Agricultural Statistics released their *Dairy Products Annual for 2000*. The publication's summary was discussed, and a chart showed the whole milk equivalents used in manufactured products.

May

Agriculture Secretary Ann M. Veneman appointed new members and reappointed incumbents to the National Fluid Milk Processor Promotion Board.

Packaged fluid milk sales in federal orders and California for the year 2000 were analyzed, and the accompanying chart showed the sales for the 11 federal orders.

The top ten counties' producer milk receipts in the Northeast Order were shown for December 2000.

The USDA adjusted the purchase prices for butter and nonfat dry milk under the CCC's support program, effective May 31, 2001.

For the first 5 months, 2001 appeared to be headed towards a strong annual average uniform price for the Northeast Order. Actual 2000 class prices were compared with 2001 futures prices in a table.

June

The schedule of payment dates for partial and final producer payments for the rest of 2001 was given.

The number of producers (grouped by production ranges) and corresponding pounds of milk by size category for December 2000 were presented in a table.

A map demonstrated the percent of Northeast Order producer milk receipts in the June 2001 pool.

Changes in Cheddar cheese and butter prices on the CME during the first half of 2001 were shown in charts.

July

The Market Administrator commenced an investigation into the expected Class I needs and available milk supplies for the months of September, October, and November of 2001. He received requests from pool handlers and cooperative associations to investigate the need to increase the shipping requirements during the period August through December.

The estimated mailbox prices for the first 6 months of 2001 and 2000 were compared and charted.

(Continued on following page)

Bulletin Highlights — 2001 *(Continued)*

The Bureau of Labor Statistics' consumer expenditure survey was explained. A table was shown that could be used to get a picture of household spending patterns for "food at home" in the Northeast.

Total U.S. milk production was still on the decline for the first half of 2001. A chart showed the top ten states percent change.

The milk feed price ratio averaged a favorable level for the past 12 months; a chart compared the years 1998 through 2001.

August

The shipping percentage was increased from 20 to 25 percent for the month of September. This was the result of an investigation initiated by handlers and cooperatives concerned about diminished milk production throughout the Northeast.

Class I prices differ by product: whole, reduced fat, lowfat, and fat-free milk. A chart compared the prices from January 2000 to September 2001.

Milk movements to the South during August 2001 totaled 22 million pounds. The net shipment of 9 million pounds of milk in 2001 was less than the net shipment of almost 16 million pounds in August 2000.

Grade AA butter and 40-pound block cheese prices on the CME were discussed and represented in charts. Milk production numbers for the top five states, from January to August 2001, were shown in a table.

September

The shipping percentages were increased from 20 to 25 percent for the months of October and November. It was determined that a 5 percentage point increase would help bring forth the additional supply needed, but not be so high as to cause uneconomical movements of milk.

The USDA announced new appointments and reappointments to the National Dairy Promotion and Research Board. The department is seeking nominations for the National Fluid Milk Processor Promotion Board.

The first *Annual Statistical Report* for the Northeast Milk Marketing Area was made available by mail as well as on the website.

A map was presented that showed milk volumes by county pooled in the Northeast Milk Marketing Area during May 2001.

Cheese and butter prices dropped in price. Charts compared the CME 40-lb. block Cheddar cheese and Grade AA butter prices from July to October during the years 2000 and 2001.

Milk by location differential was discussed. An accompanying table showed the amount of milk received from producers, during September, by each class at the plants where the milk was priced.

October

On October 23, the USDA issued a recommended decision to amend the Class III and Class IV pricing formulas under federal milk marketing orders. The recommended formulas were expected to somewhat reduce financial incentives to shift milk out of the Upper Midwest, Western, and Central orders and onto orders with higher blend prices.

The 2001 Northeast Regional Dairy Outlook Conference was held November 8 at the Albany office.

An explanation was given of how the producer price differential (PPD) and component pricing result in the total gross payment to the farmer. Charts compared the composition of the total gross payment during October 2001 and 2000.

November

On November 26, the USDA extended the time for filing comments on the recommended decision issued October 21 concerning proposed amendments to the minimum Class III and Class IV price formulas for federal milk orders.

There were 51 farm operations that marketed what roughly equated to a single tractor-trailer size load per day. A table showed the number of farms marketing 1.5 million pounds or more, by state, on the Northeast Order during May 2001.

Mailbox prices were reported for selected areas from January to June 2001 and depicted in a table.

The cooperatives' share of pooled milk on the Northeast Order was discussed, and a map showed the percent of members by state, during August 2001.

Intermarket movements of milk in and out of the Northeast Order were compared, with an accompanying table showing receipts and shipments from September to November of 2000 and 2001.

December

The contributions made by the various components to the value of the SUP during 2001 were discussed and shown on a chart.

The CCC purchase figures for the calendar year 2001 were down considerably from the same period in 2000.

A table presented an annual pool summary for all federal orders during 2001.

The volume and prices of milk received from producers shipping to handlers regulated under the Northeast Order during 2001 was discussed. A table compared the Order's pool statistics for 2000 and 2001.

Sales of fluid milk products in the Northeast Order were summarized for 2001 and compared to 2000.

USDA Equal Opportunity Policy

The U.S. Department of Agriculture (USDA) prohibits discrimination in all its programs and activities on the basis of race, color, national origin, gender, religion, age, disability, political beliefs, sexual orientation, or marital or family status. (Not all prohibited bases apply to all programs.) Persons with disabilities who require alternative means for communication of program information (Braille, large print, audiotape, etc.) should contact USDA's TARGET Center at (202) 720-2600 (voice and TDD).

To file a complaint of discrimination, write USDA, Director, Office of Civil Rights, Room 326W, Whitten Building, 1400 Independence Avenue, SW, Washington, DC 20250-9410 or call (202) 720-5964 (voice or TDD). USDA is an equal opportunity provider and employer.



MARKET ADMINISTRATOR
One Columbia Circle
Albany, NY 12203-6379

RETURN SERVICE REQUESTED

PRSR STD
US POSTAGE
PAID
Alexandria, VA
Permit 355